

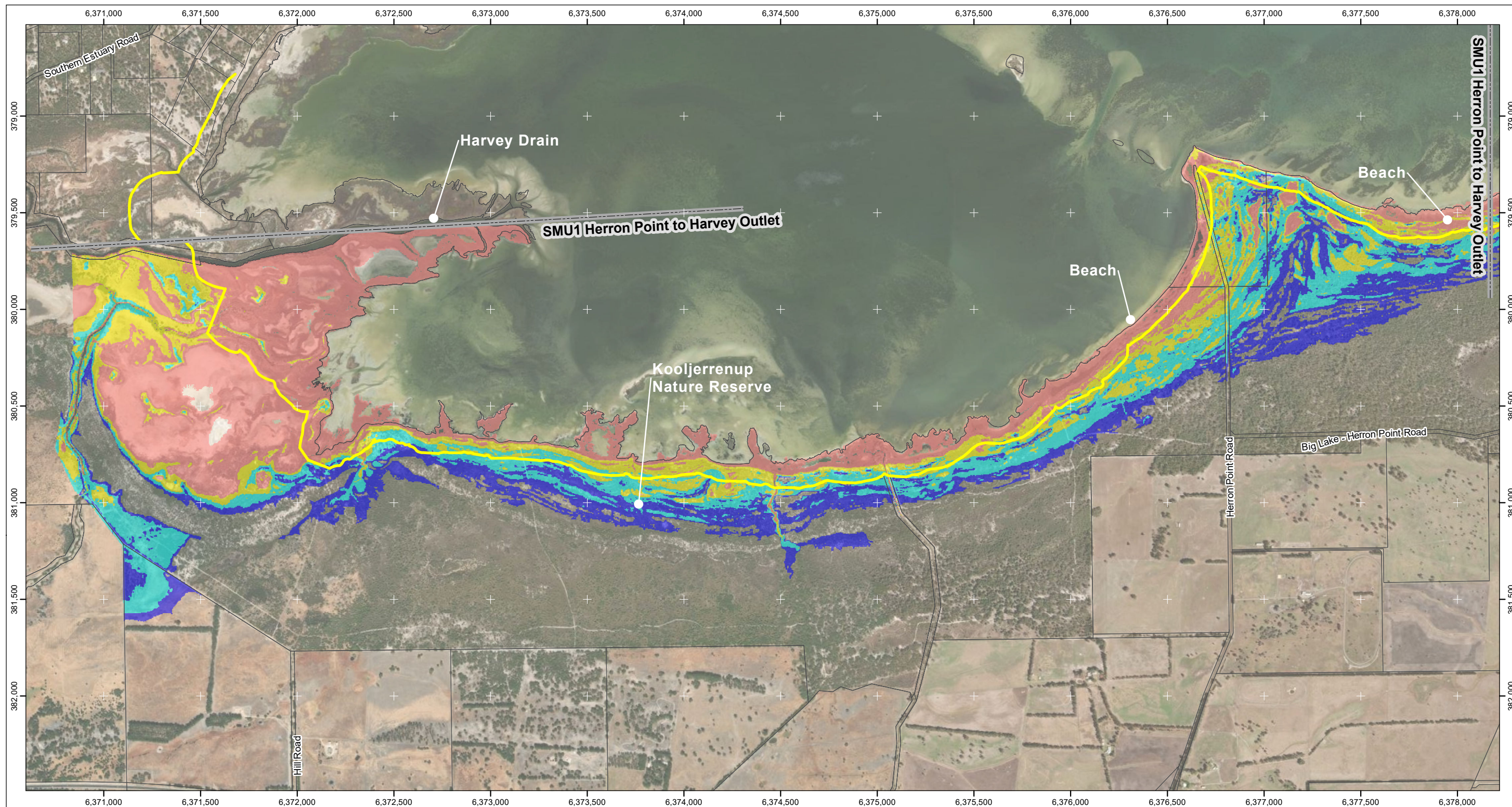


## **Appendix F**

### **Asset Mapping and Coastal Hazard Area**

**Baird.**





**Legend**

Water Depth (m)

- 1.6 - 2
- 1.1 - 1.5
- 0.6 - 1
- 0 - 0.5

2120 Coastal Processes Line



0 200 metres

**Source Data**

Inundation areas defined from LiDAR datasets collected in 2008 (DWER) and 2016 (Landgate) through the Shire of Murray. Levels across Austin Lakes development based on construction drawings (2009) with minimum 2.9m AHD level across site. Cadastral data supplied by Landgate. This product is for information purposes only and is not guaranteed. The information may be out of date and should not be relied upon without further verification from the original documents. Where the information is being used for legal purposes then the original documents must be searched for all legal requirements.

**Disclaimer**

The hazard areas depicted in this map are presented as potential inundation and coastal processes areas of impact based on SPP2.6 requirements. These future scenarios are based on work presented in Seashore 2021 and used to inform areas requiring further consideration for planning, management and monitoring in CHRMAP.

## SMU 1 - Herron Point to Harvey Outlet

### Shire of Murray Coastal Hazard Flood Mapping

#### 500yr ARI Design Storm in Planning year 2120

**Inundation Depth Based on Peak Water level  
of 2.34m AHD (includes 0.9m Sea Level Rise)**



1915 Pinjarra Rd  
Pinjarra WA 6208

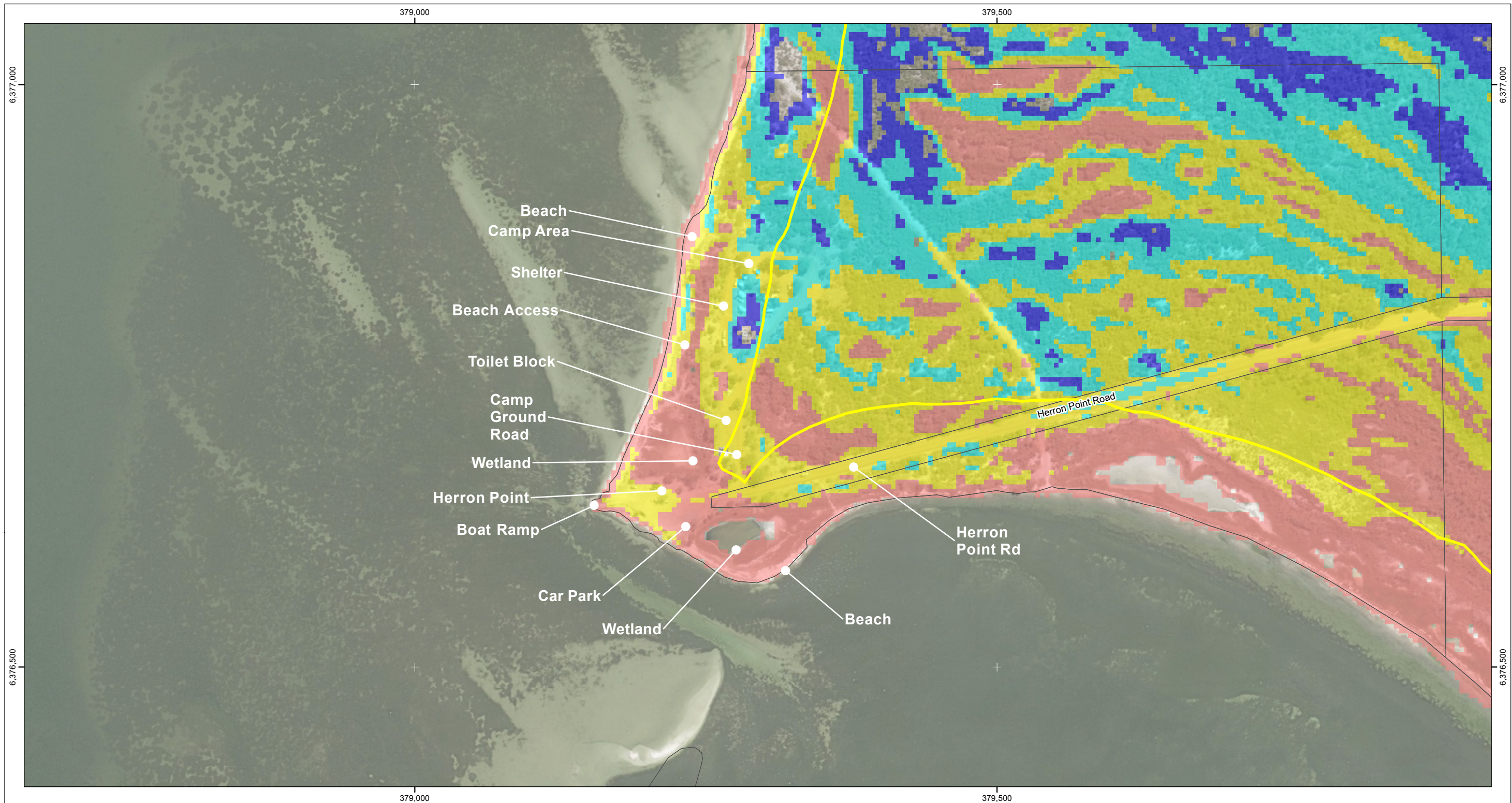
<https://www.murray.wa.gov.au/>

Mapping prepared by **Baird.**

Map Published: 10 Nov. 2021







**Legend**

Water Depth (m)

- 1.6 - 2
- 1.1 - 1.5
- 0.6 - 1
- 0 - 0.5
- 2120 Coastal Processes Line

0  200 metres

**Source Data**  
 Inundation areas defined from LiDAR datasets collected in 2008 (DWER) and 2016 (Landgate) through the Shire of Murray. Levels across Austin Lakes development based on construction drawings (2009) with minimum 2.9m AHD level across site. Cadastral data supplied by Landgate. This product is for information purposes only and is not guaranteed. The information may be out of date and should not be relied upon without further verification from the original documents. Where the information is being used for legal purposes then the original documents must be searched for all legal requirements.

**Disclaimer**  
 The hazard areas depicted in this map are presented as potential inundation and coastal processes areas of impact based on SPP2.6 requirements. These future scenarios are based on work presented in Seashore 2021 and used to inform areas requiring further consideration for planning, management and monitoring in CHRMAP.

**SMU 1 – Herron Point**

**Shire of Murray**

**Coastal Hazard Flood Mapping**

**500yr ARI Design Storm  
in Planning year 2120**

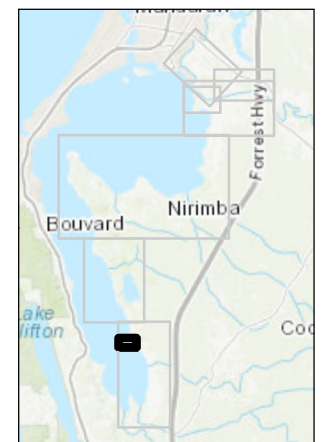
**Inundation Depth Based on Peak Water level  
of 2.34m AHD (includes 0.9m Sea Level Rise)**



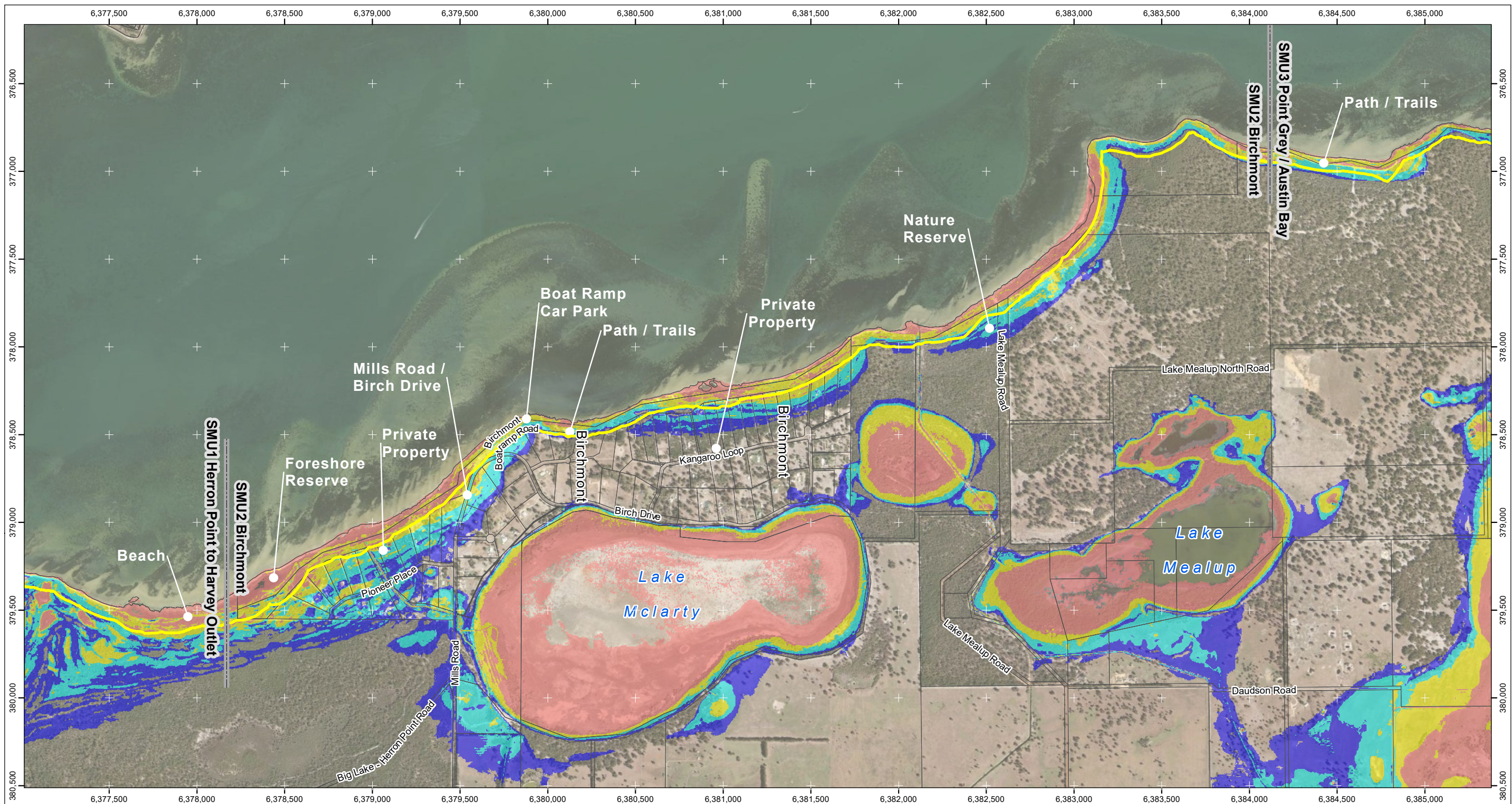
1915 Pinjarra Rd  
Pinjarra WA 6208  
<https://www.murray.wa.gov.au/>

Mapping prepared by **Baird.**

Map Published: 10 Nov. 2021







**Legend**

Water Depth (m)

- 1.6 - 2
- 1.1 - 1.5
- 0.6 - 1
- 0 - 0.5

2120 Coastal Processes Line



0 200 metres

**Source Data**  
Inundation areas defined from LiDAR datasets collected in 2008 (DWER) and 2016 (Landgate) through the Shire of Murray. Levels across Austin Lakes development based on construction drawings (2009) with minimum 2.9m AHD level across site. Cadastral data supplied by Landgate. This product is for information purposes only and is not guaranteed. The information may be out of date and should not be relied upon without further verification from the original documents. Where the information is being used for legal purposes then the original documents must be searched for all legal requirements.

**Disclaimer**  
The hazard areas depicted in this map are presented as potential inundation and coastal processes areas of impact based on SPP2.6 requirements. These future scenarios are based on work presented in Seashore 2021 and used to inform areas requiring further consideration for planning, management and monitoring in CHRMAP.

## SMU 2 – Birchmont

### Shire of Murray Coastal Hazard Flood Mapping

**500yr ARI Design Storm  
in Planning year 2120**

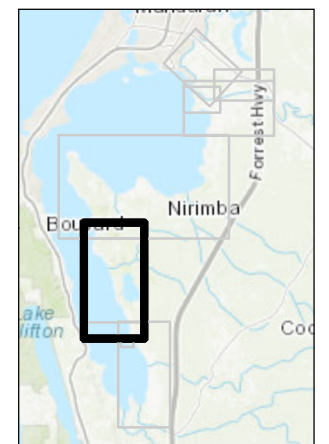
**Inundation Depth Based on Peak Water level  
of 2.34m AHD (includes 0.9m Sea Level Rise)**



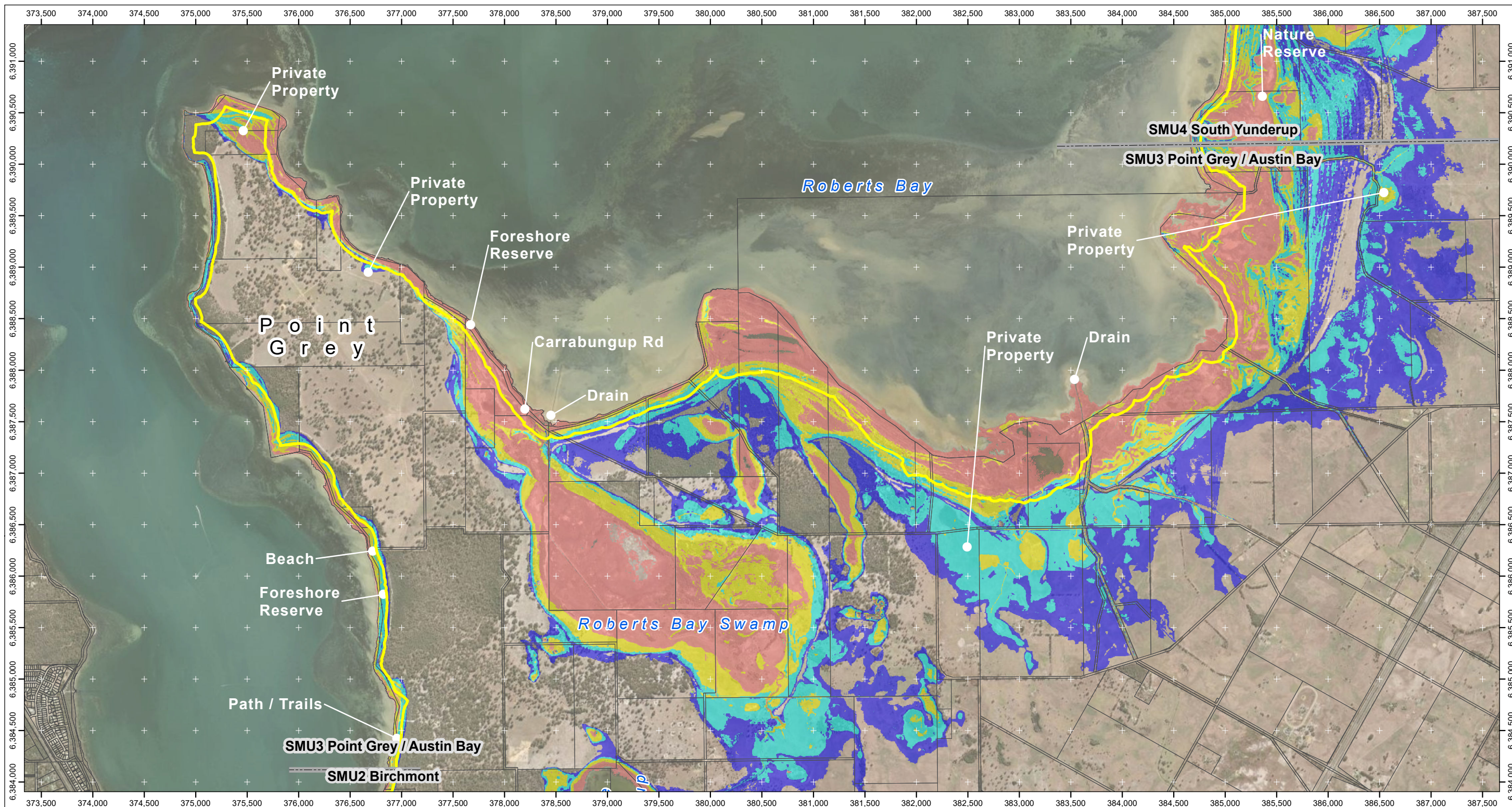
1915 Pinjarra Rd  
Pinjarra WA 6208  
<https://www.murray.wa.gov.au/>

Mapping prepared by **Baird.**

Map Published: 10 Nov. 2021







**Legend**

Water Depth (m)

- 1.6 - 2
- 1.1 - 1.5
- 0.6 - 1
- 0 - 0.5

2120 Coastal Processes Line



0 200 metres

**Source Data**  
Inundation areas defined from LiDAR datasets collected in 2008 (DWER) and 2016 (Landgate) through the Shire of Murray. Levels across Austin Lakes development based on construction drawings (2009) with minimum 2.9m AHD level across site. Cadastral data supplied by Landgate. This product is for information purposes only and is not guaranteed. The information may be out of date and should not be relied upon without further verification from the original documents. Where the information is being used for legal purposes then the original documents must be searched for all legal requirements.

**Disclaimer**  
The hazard areas depicted in this map are presented as potential inundation and coastal processes areas of impact based on SPP2.6 requirements. These future scenarios are based on work presented in Seashore 2021 and used to inform areas requiring further consideration for planning, management and monitoring in CHRMAP.

## SMU 3 – Point Grey / Austin Bay

Shire of Murray  
Coastal Hazard Flood Mapping

500yr ARI Design Storm  
in Planning year 2120

Inundation Depth Based on Peak Water level  
of 2.34m AHD (includes 0.9m Sea Level Rise)

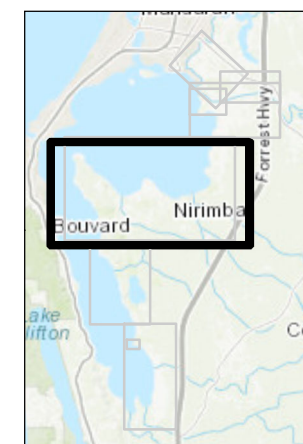


1915 Pinjarra Rd  
Pinjarra WA 6208

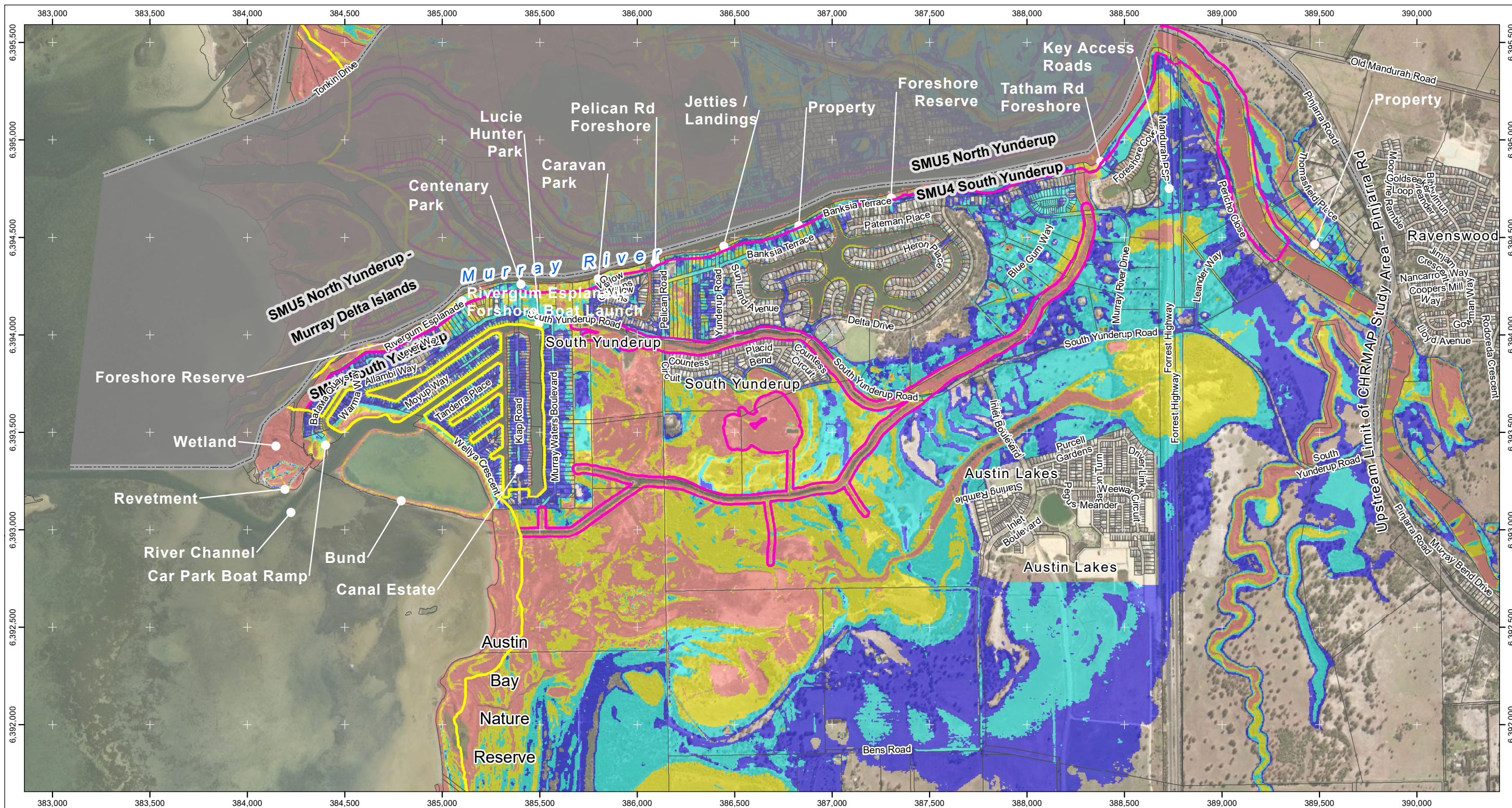
<https://www.murray.wa.gov.au/>

Mapping prepared by **Baird.**

Map Published: 10 Nov. 2021







**Legend**

Water Depth (m)

- 1.6 - 2
- 1.1 - 1.5
- 0.6 - 1
- 0 - 0.5

2120 Coastal Processes Line

2120 Erosion

River Banks



0 200 metres

**Source Data**  
Inundation areas defined from LiDAR datasets collected in 2008 (DWER) and 2016 (Landgate) through the Shire of Murray. Levels across Austin Lakes development based on construction drawings (2009) with minimum 2.9m AHD level across site. Cadastral data supplied by Landgate. This product is for information purposes only and is not guaranteed. The information may be out of date and should not be relied upon without further verification from the original documents. Where the information is being used for legal purposes then the original documents must be searched for all legal requirements.

**Disclaimer**  
The hazard areas depicted in this map are presented as potential inundation and coastal processes areas of impact based on SPP2.6 requirements. These future scenarios are based on work presented in Seashore 2021 and used to inform areas requiring further consideration for planning, management and monitoring in CHRMAP.

## SMU 4 – South Yunderup

### Shire of Murray

### Coastal Hazard Flood Mapping

**500yr ARI Design Storm**  
**in Planning year 2120**

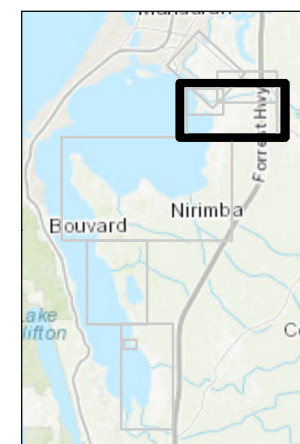
**Inundation Depth Based on Peak Water level**  
**of 2.34m AHD (includes 0.9m Sea Level Rise)**



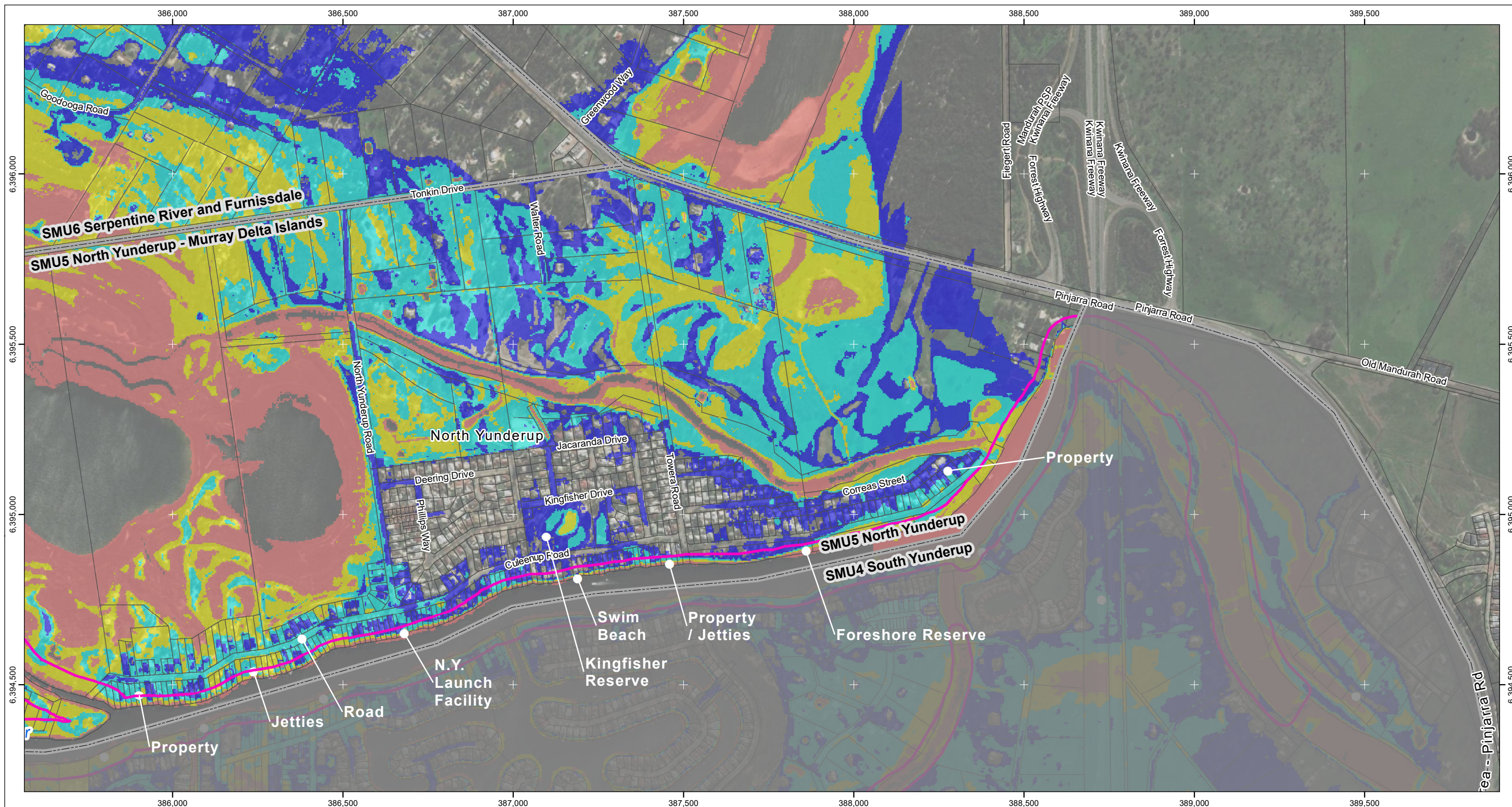
1915 Pinjarra Rd  
Pinjarra WA 6208  
<https://www.murray.wa.gov.au/>

Mapping prepared by **Baird.**

Map Published: 10 Nov. 2021







## Legend

Water Depth (m)

- 1.6 - 2
- 1.1 - 1.5
- 0.6 - 1
- 0 - 0.5

- 2120 Coastal Processes Line
- 2120 Erosion River Banks



0 200 metres

### Source Data

Inundation areas defined from LiDAR datasets collected in 2008 (DWER) and 2016 (Landgate) through the Shire of Murray. Levels across Austin Lakes development based on construction drawings (2009) with minimum 2.9m AHD level across site. Cadastral data supplied by Landgate. This product is for information purposes only and is not guaranteed. The information may be out of date and should not be relied upon without further verification from the original documents. Where the information is being used for legal purposes then the original documents must be searched for all legal requirements.

### Disclaimer

The hazard areas depicted in this map are presented as potential inundation and coastal processes areas of impact based on SPP2.6 requirements. These future scenarios are based on work presented in Seashore 2021 and used to inform areas requiring further consideration for planning, management and monitoring in CHRMAP.

## SMU 5 – North Yunderup

### Shire of Murray

### Coastal Hazard Flood Mapping

**500yr ARI Design Storm**  
**in Planning year 2120**

**Inundation Depth Based on Peak Water level**  
**of 2.34m AHD (includes 0.9m Sea Level Rise)**

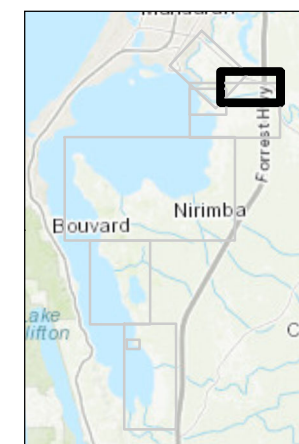


1915 Pinjarra Rd  
Pinjarra WA 6208

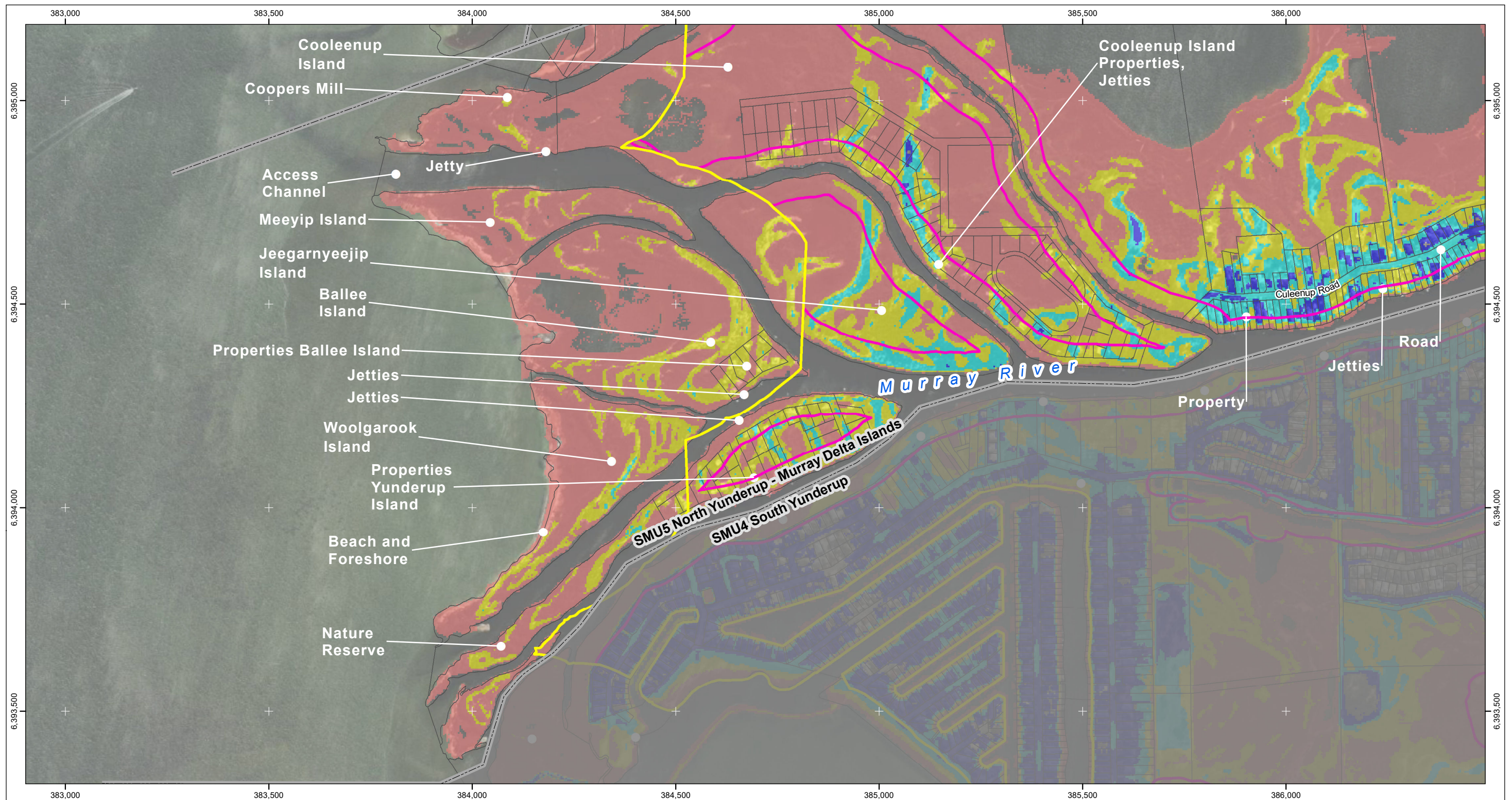
<https://www.murray.wa.gov.au/>

Mapping prepared by **Baird.**

Map Published: 10 Nov. 2021







**Legend**

Water Depth (m)

- 1.6 - 2
- 1.1 - 1.5
- 0.6 - 1
- 0 - 0.5

2120 Coastal Processes Line

2120 Erosion River Banks



0 200 metres

**Source Data**  
Inundation areas defined from LiDAR datasets collected in 2008 (DWER) and 2016 (Landgate) through the Shire of Murray. Levels across Austin Lakes development based on construction drawings (2009) with minimum 2.9m AHD level across site. Cadastral data supplied by Landgate. This product is for information purposes only and is not guaranteed. The information may be out of date and should not be relied upon without further verification from the original documents. Where the information is being used for legal purposes then the original documents must be searched for all legal requirements.

**Disclaimer**  
The hazard areas depicted in this map are presented as potential inundation and coastal processes areas of impact based on SPP2.6 requirements. These future scenarios are based on work presented in Seashore 2021 and used to inform areas requiring further consideration for planning, management and monitoring in CHRMAP.

## SMU 5 – North Yunderup – Murray Delta Islands

### Shire of Murray Coastal Hazard Flood Mapping

**500yr ARI Design Storm  
in Planning year 2120**

**Inundation Depth Based on Peak Water level  
of 2.34m AHD (includes 0.9m Sea Level Rise)**



1915 Pinjarra Rd  
Pinjarra WA 6208

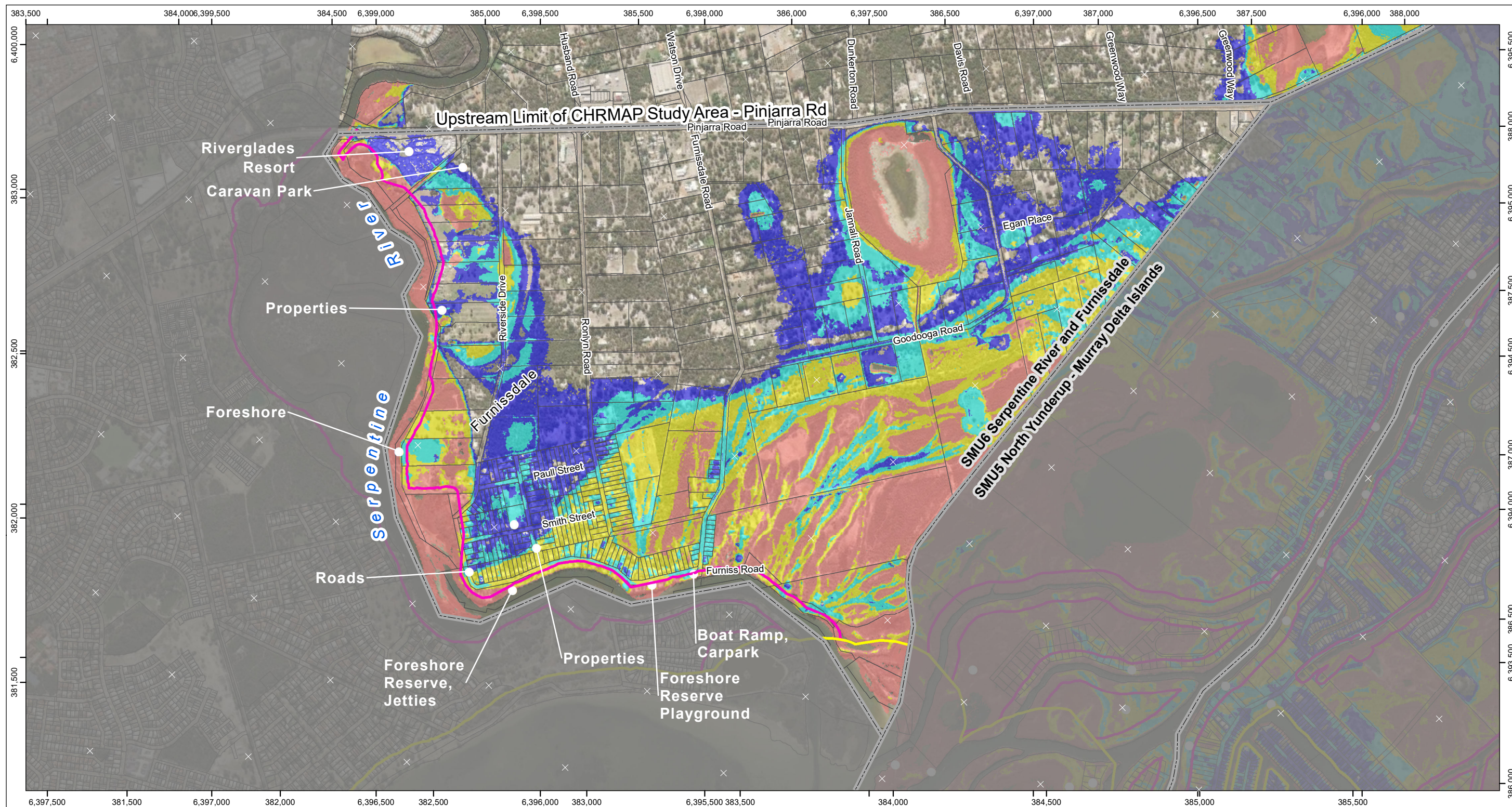
<https://www.murray.wa.gov.au/>

Mapping prepared by **Baird.**

Map Published: 11 Nov. 2021







**Legend**

Water Depth (m)

- 1.6 - 2
- 1.1 - 1.5
- 0.6 - 1
- 0 - 0.5

2120 Coastal Processes Line

2120 Erosion River Banks



0 200 metres

**Source Data**  
Inundation areas defined from LiDAR datasets collected in 2008 (DWER) and 2016 (Landgate) through the Shire of Murray. Levels across Austin Lakes development based on construction drawings (2009) with minimum 2.9m AHD level across site. Cadastral data supplied by Landgate. This product is for information purposes only and is not guaranteed. The information may be out of date and should not be relied upon without further verification from the original documents. Where the information is being used for legal purposes then the original documents must be searched for all legal requirements.

**Disclaimer**  
The hazard areas depicted in this map are presented as potential inundation and coastal processes areas of impact based on SPP2.6 requirements. These future scenarios are based on work presented in Seashore 2021 and used to inform areas requiring further consideration for planning, management and monitoring in CHRMAP.

## SMU 6 – Serpentine River and Furnissdale

Shire of Murray  
Coastal Hazard Flood Mapping

500yr ARI Design Storm  
in Planning year 2120

Inundation Depth Based on Peak Water level  
of 2.34m AHD (includes 0.9m Sea Level Rise)



1915 Pinjarra Rd  
Pinjarra WA 6208

<https://www.murray.wa.gov.au/>

Mapping prepared by **Baird.**

Map Published: 11 Nov. 2021

