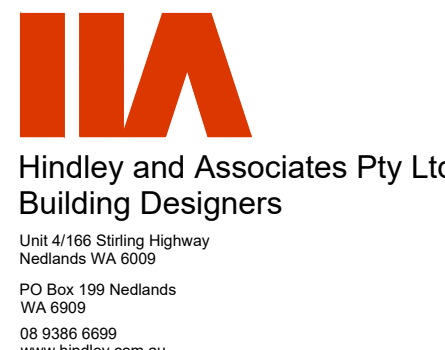
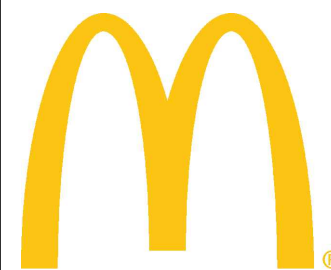


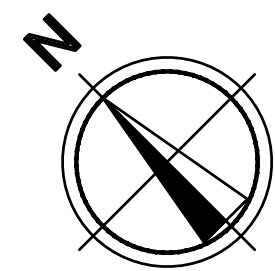
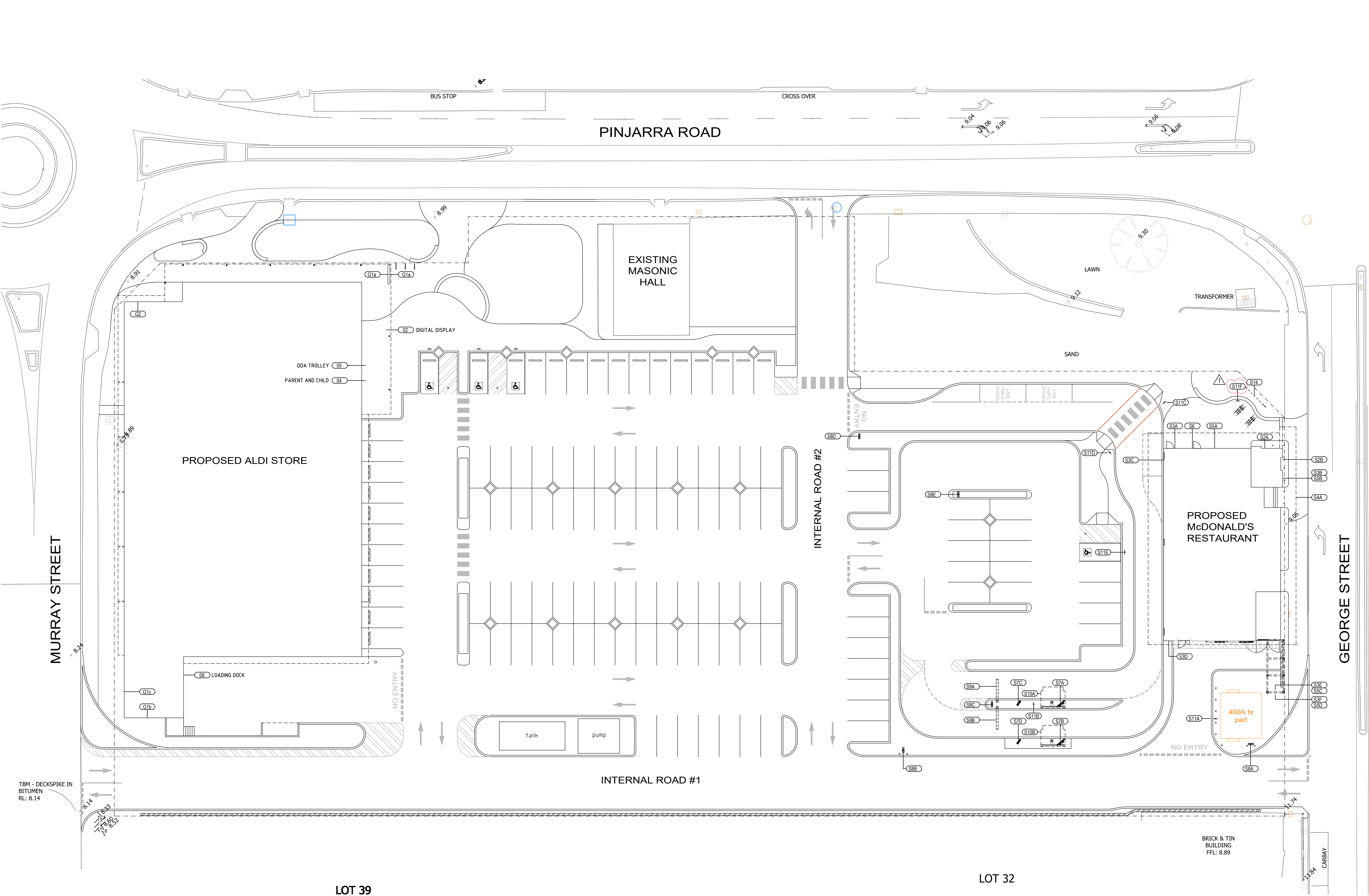


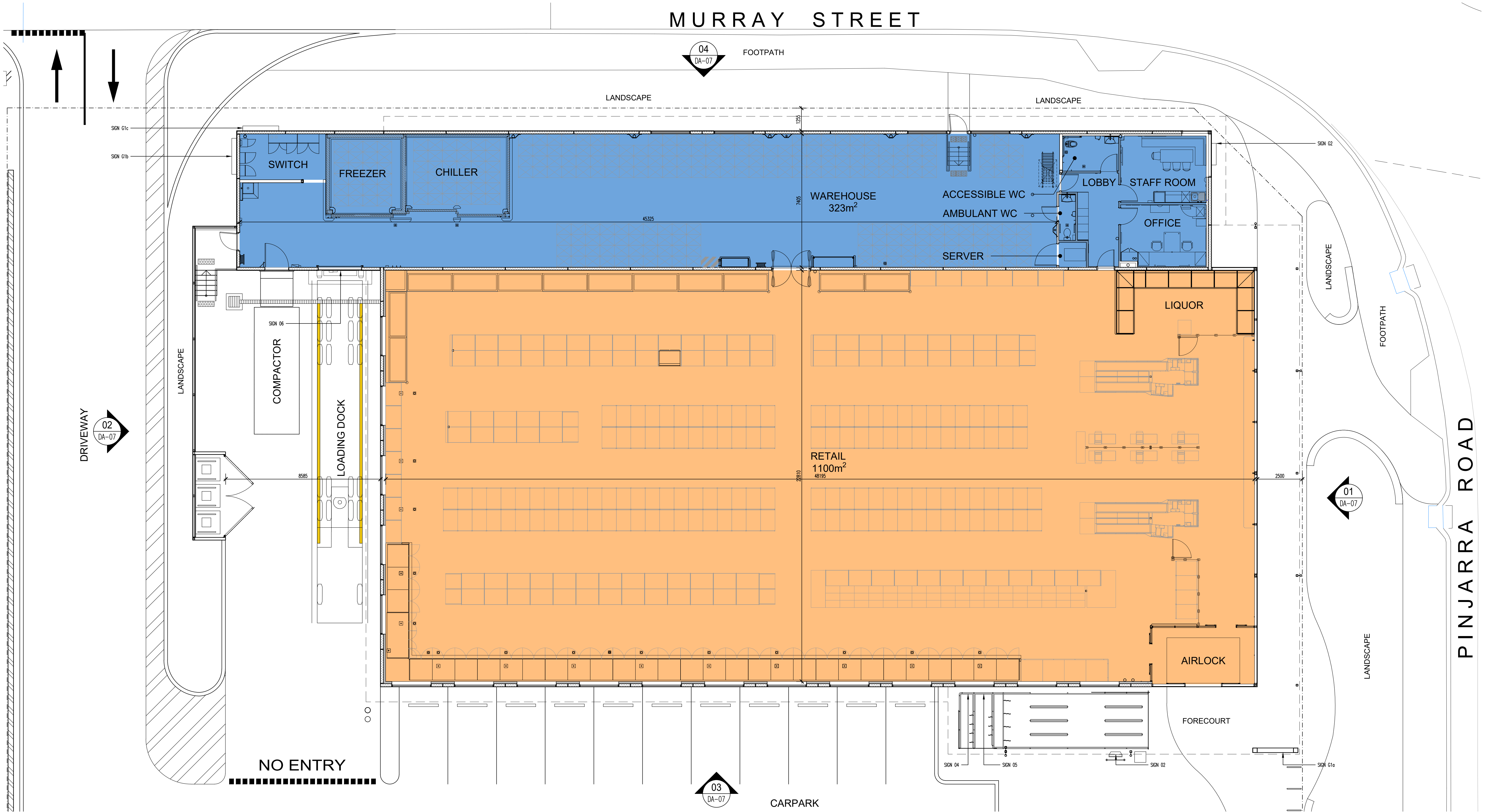
contractor to verify all dimensions on site prior to commencing work or ordering any materials. Do not scale drawings, use figured dimensions only. Inform architect of any conflict between site conditions and documents. Architectural documents are to be read in conjunction with all relevant consultants drawings. Technical drawings are to be read in conjunction with appropriate sections of technical specification. Copyright of designs shown herein is retained by this office, written authority is required for any reproduction. Copyright 2020	REV	DATE	DESCRIPTION	 <div>Hindley and Associates Pty Ltd Building Designers Unit 4/198 Stirling Highway Nedlands WA 6009 PO Box 199 Nedlands WA 6009 08 9386 6699 www.hindley.com.au</div>		 <div>Suite 101, Level 1, 518 Little Bourke Street Melbourne Victoria 3000 t: +61 3 9614 1645 f: +61 3 9614 1945 e: info@architecturehq.com w: www.architecturehq.com</div>		Project PROPOSED ALDI STORE & McDONALD'S LOT 2, 3, 4, 31 & 41 MURRAY ST. PINJARRA		TOWN PLANNING				
								Drawing No.	DA-01					
								Job No 251677						
								Scale 1:250 @ A1						
	Drawing EXISTING SITE PLAN								Date MAY 2025	Revision 0				
									Drawn AJJ					




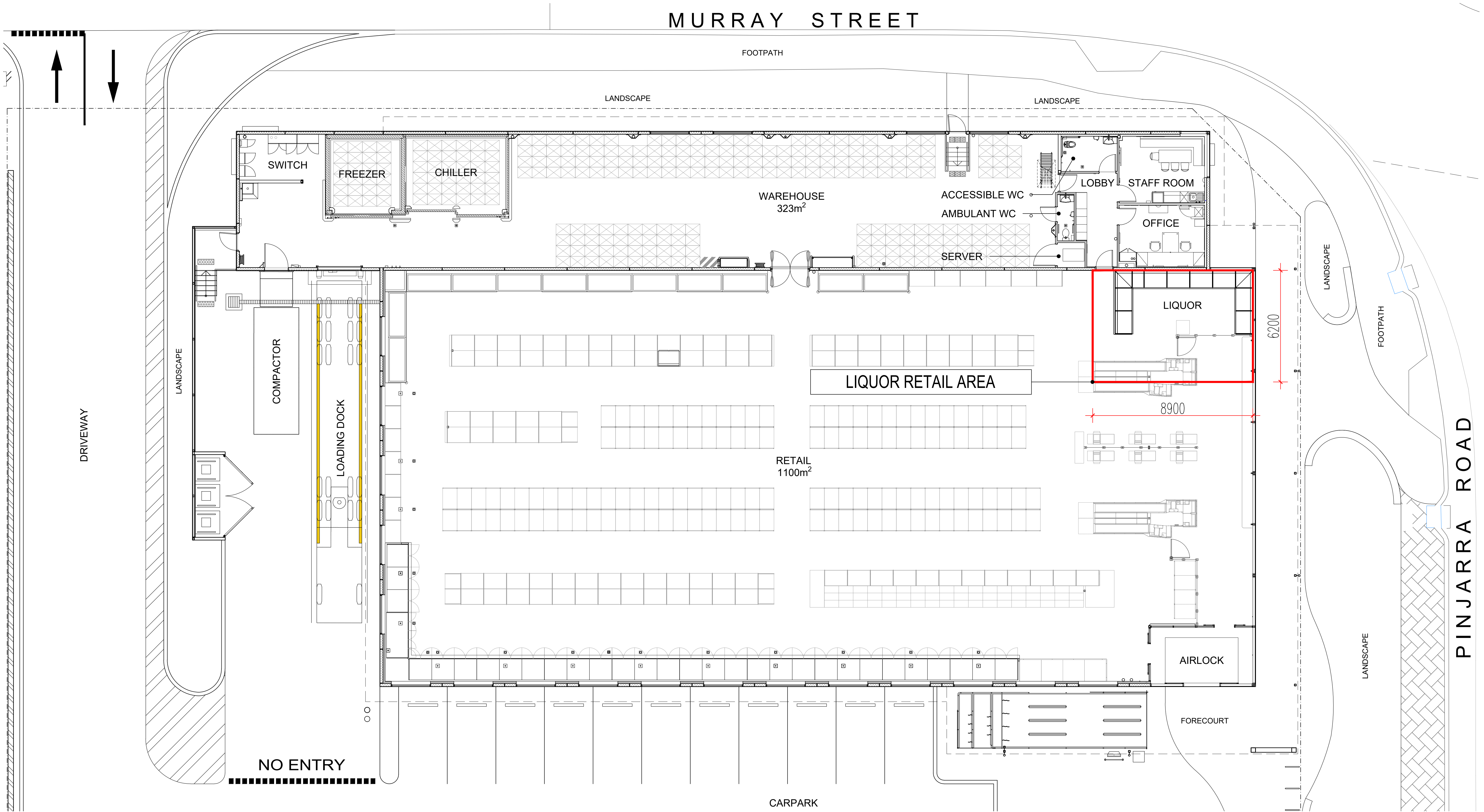
TOWN PLANNING	
Job No 251677	Drawing No.
Scale 1:250 @ A1	DA-02
Date MAY 2025	
Drawn AJJ	Revision 0

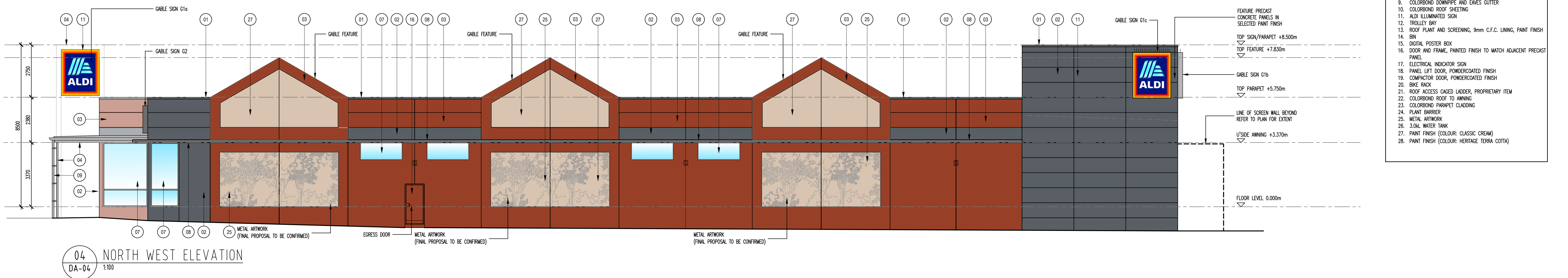
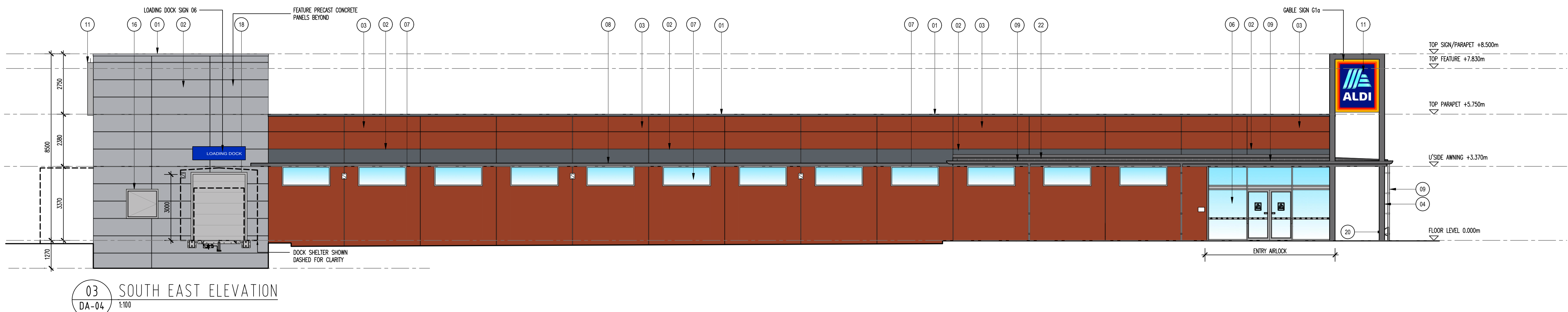
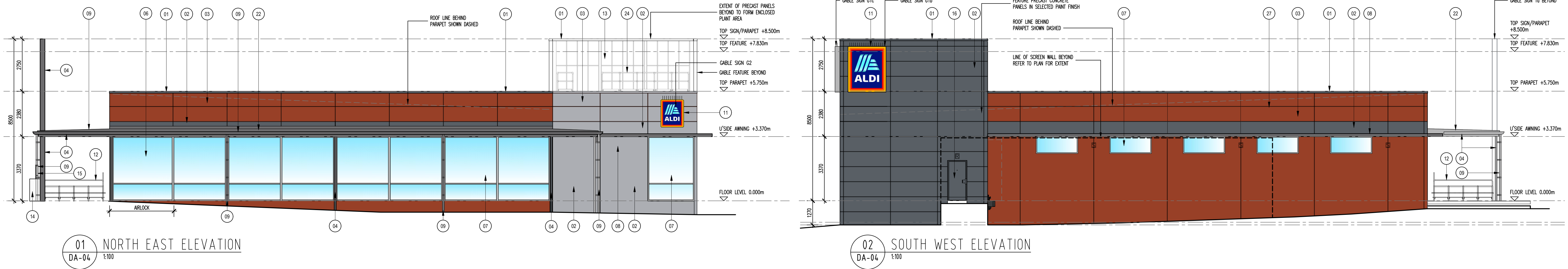


McDONALD'S SIGNAGE SCHEDULE		
Tag	Description	Illuminated
S2A	"Play Place" Wall Sign	Yes
S2B	"Play Place" Wall Sign	
S3A	Golden Arches Wall Sign	
S3B	Golden Arches Wall Sign	
S3C	Golden Arches Wall Sign	
S3D	Golden Arches Wall Sign	
S3E	Golden Arches Wall Sign	
S3F	Golden Arches Wall Sign	
S5A	"McCafe" Button Sign 81200mm	
S5B	"McCafe" Wall Sign	
S5C	"McCafe" Wall Sign	
S5D	"McCafe" Wall Sign	
S6	"McDelivery" Wall Sign (Double sided)	
S7A	Digital menuboard (Double)	
S7B	Digital menuboard (Double)	
S7C	Digital menuboard (Single)	
S7D	Digital menuboard (Single)	
S8A	Directional Sign (Double sided) Side 1 = "Entry" with arrow Side 2 = "Entry" with arrow	No
S8B	Directional Sign (Double sided) Side 1 = "Drive Thru" with arrow Side 2 = "Drive Thru" with arrow	
S8C	Directional Sign (Single sided) Side 1 = "Any Lane, Any Time"	
S8D	Directional Sign (Double sided) Side 1 = "No Entry" Side 2 = "Thank You"	
S8E	Directional Sign (Single sided) Side 1 = "Drive-Thru"	
S8A	Height Clearance Gantry Sign	
S8B	Height Clearance Gantry Sign	
S10A	Drive-Thru Information Sign "1. Order here"	
S10B	Drive-Thru Information Sign "1. Order here"	
S11A	No Pedestrian Access Sign	
S11B	No Pedestrian Access Sign	
S11C	Pedestrian Caution Sign (Double Sided)	
S11D	Pedestrian Caution Sign (Double Sided)	
S11E	Accessible Parking Sign	
S11F	Bicycle Parking Sign	
S13A	Drive-Thru Information Sign "2. Pay Here"	
S13B	Drive-Thru Information Sign "3. Pick Up Here"	
S13C	Drive-Thru Information Sign "4. Pick Up Here"	
S14	Banner Sign	



Contractor to verify all dimensions on site prior to commencing work or ordering any materials. Do not scale drawings, use figured dimensions only. Inform architect of any conflict between site conditions and documents. Architectural documents are to be read in conjunction with all relevant consultants drawings. Technical drawings are to be read in conjunction with appropriate sections of technical specification. Copyright of designs shown herein is retained by this office, written authority is required for any reproduction. Copyright 2025	REV	DATE	DESCRIPTION	 Hindley and Associates Pty Ltd Building Designers Unit 4/166 Spring Highway Nedlands WA 6009 PO Box 199 Nedlands WA 6009 08 9386 6699 www.hindley.com.au		 Suite 101, Level 1, 518 Little Bourke Street Melbourne Victoria 3000 t: +61 3 9614 1645 f: +61 3 9614 1945 e: info@architecturehq.com w: www.architecturehq.com		Project PROPOSED ALDI STORE & McDONALD'S LOT 2, 3, 4, 31 & 41 MURRAY ST. PINJARRA Drawing PROPOSED FLOOR PLAN	TOWN PLANNING	
	P1	14.05.25	PRELIMINARY ISSUE						Job No 251677	Drawing No.
	P2	02.06.25	PRELIMINARY ISSUE						Scale 1:100@A1	DA-04
	P3	04.06.25	PRELIMINARY ISSUE						Date APR 2025	
	P4	06.06.25	PRELIMINARY ISSUE						Drawn MJH	Revision P5






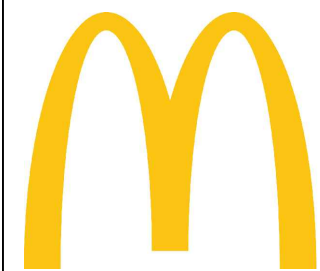


LEGEND:

08 WALL MOUNTED LIGHT FIXTURE - REFER ELECTRICAL ENGINEER'S DETAILS
09 WALL MOUNTED LIGHT FIXTURE - REFER ELECTRICAL ENGINEER'S DETAILS

NOTE:
REFER TO THE ELECTRICAL DOCUMENTS FOR DETAILS OF FITTINGS.
REFER TO EXTERNAL FINISHES SCHEDULE FOR COLOURS

MATERIAL LEGEND:

- COLORBOND CAPPING
- PRECAST RC PANEL PAINTED (COLOUR: DRIVE TIME)
- PRECAST RC PANEL PAINTED (COLOUR: HERITAGE TERRA COTTA)
- PAINTED STEEL
- SHOFRONT
ALUMINIUM FRAMES - NATURAL ANODISED WITH CLEAR SAFETY GLASS (TO COMPLY WITH SECTION J OF BCA)
- AIRLOCK
ALUMINIUM FRAMES - NATURAL ANODISED WITH CLEAR SAFETY GLASS (TO COMPLY WITH SECTION J OF BCA)
- WINDOWS
ALUMINIUM FRAMES - NATURAL ANODISED WITH CLEAR SAFETY GLASS (TO COMPLY WITH SECTION J OF BCA)
- SUN SHADE
- COLORBOND DOWNPIPE AND EAVES GUTTER
- TROLLEY BAY
- ROOF PLANT AND SCREENING, 9mm C.F.C. LINING, PAINT FINISH
- BIN
- DIGITAL POSTER BOX
- DOOR AND FRAME, PAINTED FINISH TO MATCH ADJACENT PRECAST PANEL
- ELECTRICAL INDICATOR SIGN
- PANEL LIFT DOOR, POWDERCOATED FINISH
- COMPACTOR DOOR, POWDERCOATED FINISH
- BIKE RACK
- ROOF ACCESS CAGED LADDER, PROPRIETARY ITEM
- COLORBOND ROOF TO AWNING
- COLORBOND PARAPET CLADDING
- PLANT BARRIER
- METAL ARTWORK (FINAL PROPOSAL TO BE CONFIRMED)
- 3.0L WATER TANK
- PAINT FINISH COLOUR: CLASSIC CREAM
- PAINT FINISH (COLOUR: HERITAGE TERRA COTTA)

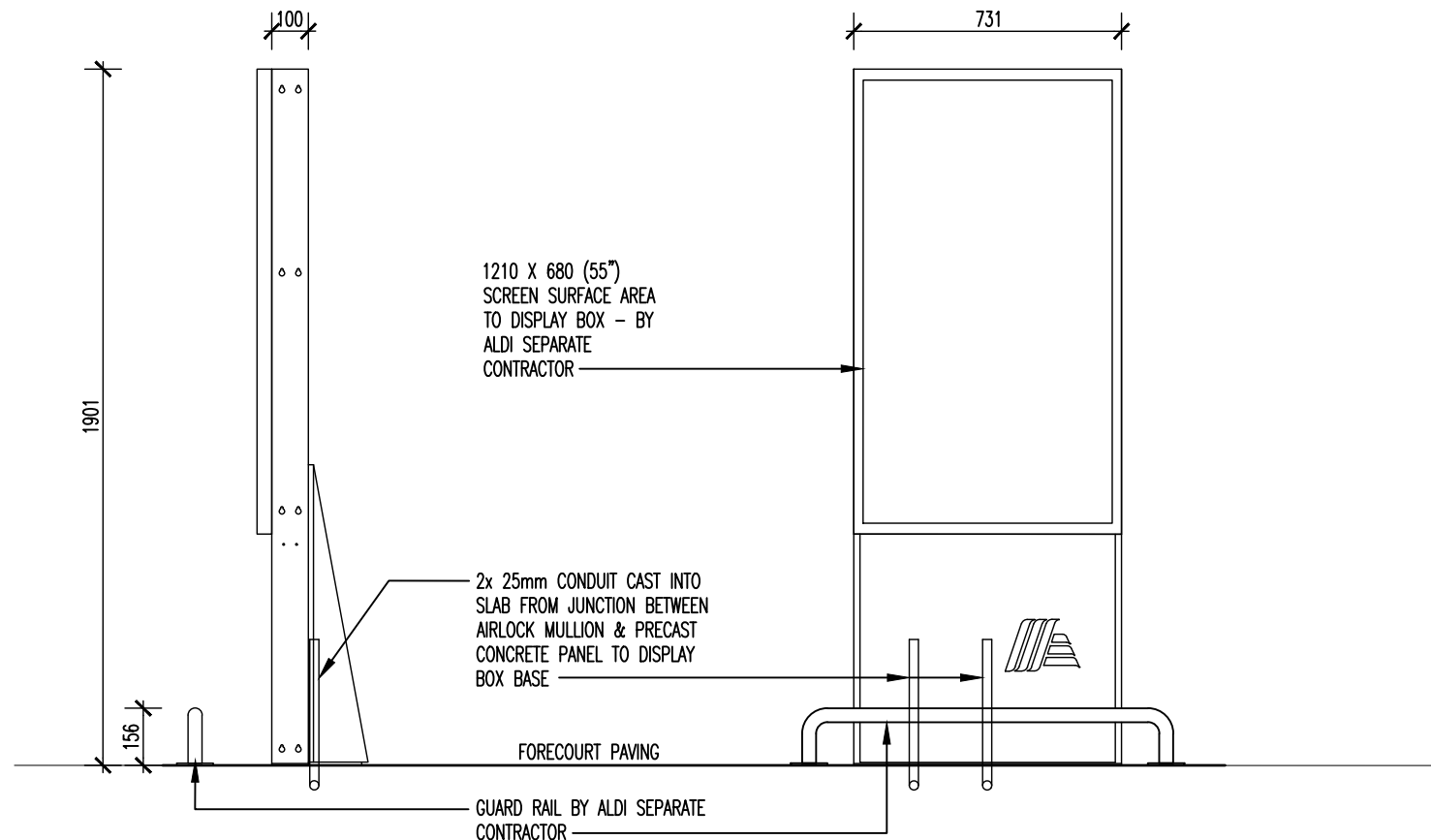
Contractor to verify all dimensions on site prior to commencing work or ordering any materials. Do not scale drawings, use figured dimensions only. Inform architect of any conflict between site conditions and documents. Architectural documents are to be read in conjunction with all relevant consultants drawings. Technical drawings are to be read in conjunction with appropriate sections of technical specification. Copyright of designs shown herein is retained by this office, written authority is required for any reproduction. Copyright 2025	REV	DATE	DESCRIPTION	 Hindley and Associates Pty Ltd Building Designers Unit 4/166 Stirling Highway Nedlands WA 6009 PO Box 199 Nedlands WA 6009 08 9386 6699 www.hindley.com.au		 Suite 101, Level 1, 518 Little Bourke Street Melbourne Victoria 3000 t: +61 3 9614 1645 f: +61 3 9614 1945 e: info@architecturehq.com w: www.architecturehq.com		Project PROPOSED ALDI STORE & McDONALD'S LOT 2, 3, 4, 31 & 41 MURRAY ST. PINJARRA	TOWN PLANNING		
	P1	14.05.25	PRELIMINARY ISSUE						Job No	251677	Drawing No. DA-07
	P2	02.06.25	PRELIMINARY ISSUE						Scale	1:100 @A1	
	P3	04.06.25	PRELIMINARY ISSUE						Date	APR 2025	
	P4	13.06.25	PRELIMINARY ISSUE						Drawn	DG	Revision
Drawing PROPOSED ELEVATIONS											



SIGN NUMBER G1a, G1b, G1c

SIGN TYPE 'G1'

SCALE 1:20
DESCRIPTION
WALL MOUNTED INTERNALLY
ILLUMINATED LIGHT BOX
2400 (h) x 2000 (w) x 266mm (d)
SINGLE SIDED WITH EXCEPTION OF
SIGN 01a THAT IS DOUBLE SIDED



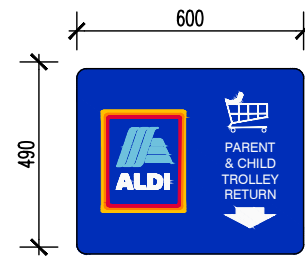
SIGN NUMBER 02 SIGN
'DIGITAL DISPLAY BOARD'

SCALE 1:20
DESCRIPTION
ALDI STAINLESS STEEL DISPLAY BOX WITH 680
x 1210mm DIGITAL DISPLAY SCREEN.
730 (w) x 1901 (h) x 100mm (d)



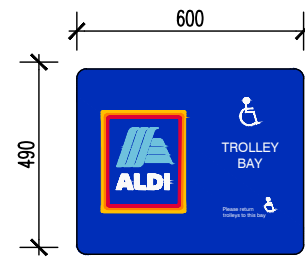
SIGN NUMBER G2
SIGN TYPE 'G2'

SCALE 1:20
DESCRIPTION
WALL MOUNTED INTERNALLY
ILLUMINATED LIGHT BOX
1440 (h) x 1200 (w) x 266mm (d)
SINGLE SIDED



SIGN NUMBER 04
SIGN 'PARENT AND CHILD TROLLEY'

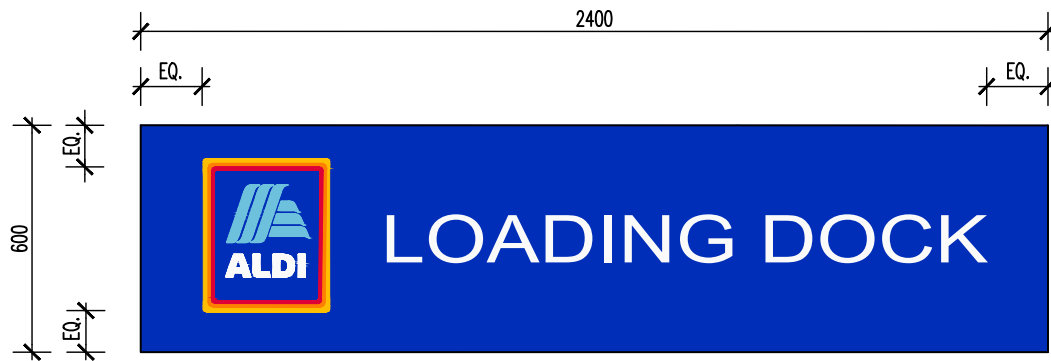
SCALE 1:20
DESCRIPTION
Size: 600(w) x 490(h) x 4(d)mm approx.
Face material: 4MM CNC cut White ACM
Graphics: Fully Digitally printed graphic on
cast white film with compatible clear gloss
over laminate. Graphic to be wrapped around
edges 20mm



SIGN NUMBER 05 SIGN
'DDA TROLLEY BAY'

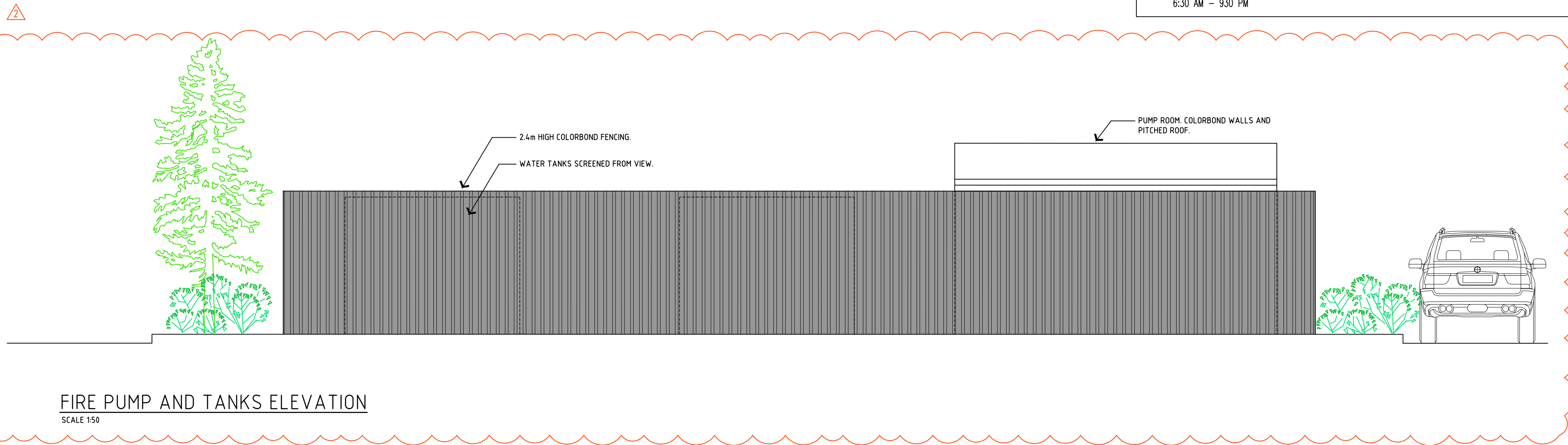
SCALE 1:20
DESCRIPTION
Size: 600(w) x 490(h) x 4(d)mm approx.
Face material: 4MM CNC cut White ACM
Graphics: Fully Digitally printed graphic on
cast white film with compatible clear gloss
over laminate. Graphic to be wrapped around
edges 20mm

SIGNAGE SCHEDULE				
SIGN TYPE	LOCATION	DIMENSIONS	INTERNALLY – ILLUMINATED	QTY
G1	1x EAST & WEST FACING, 1x EAST FACING, 1x SOUTH FACING	2000(w) x 2400(h) x 266mm(d)	YES	3
G2	1x NORTH FACING	1200(w) x 1440(h) x 266mm(d)	YES	1
DIGITAL DISPLAY BOARD	ADJACENT TO ENTRY, NORTH FACING	730 (w) x 1901 (h) x 100mm (d)	YES	1
PARENT WITH CHILD TROLLEY BAY	TROLLEY BAY, NORTH FACING	600(w) x 490(h) x 4(d)mm approx.	NO	1
DISABLED TROLLEY BAY	TROLLEY BAY, NORTH FACING	600(w) x 490(h) x 4(d)mm approx.	NO	1
LOADING DOCK	LOADING DOCK, NORTH FACING	2400(w) x 600(h) x 4(d)mm approx.	NO	1
* ILLUMINATED SIGN OPERATION TIMES: 6:30 AM – 9:30 PM				



SIGN NUMBER 06
SIGN 'LOADING DOCK'

SCALE 1:20
DESCRIPTION
Size: 2400(w) x 600(h) x 4(d)mm approx.
Face material: 4MM CNC cut White ACM
Graphics: Fully Digitally printed graphic on
cast white film with compatible clear gloss
over laminate. Graphic to be wrapped around
edges 20mm



FIRE PUMP AND TANKS ELEVATION
SCALE 1:50

Contractor to verify all dimensions on site prior to commencing work or ordering any materials. Do not scale drawings, use figured dimensions only. Inform architect of any conflict between site conditions and documents. Architectural documents are to be read in conjunction with all relevant consultants drawings. Technical drawings are to be read in conjunction with appropriate sections of technical specification. Copyright of designs shown herein is retained by this office, written authority is required for any reproduction. Copyright 2025

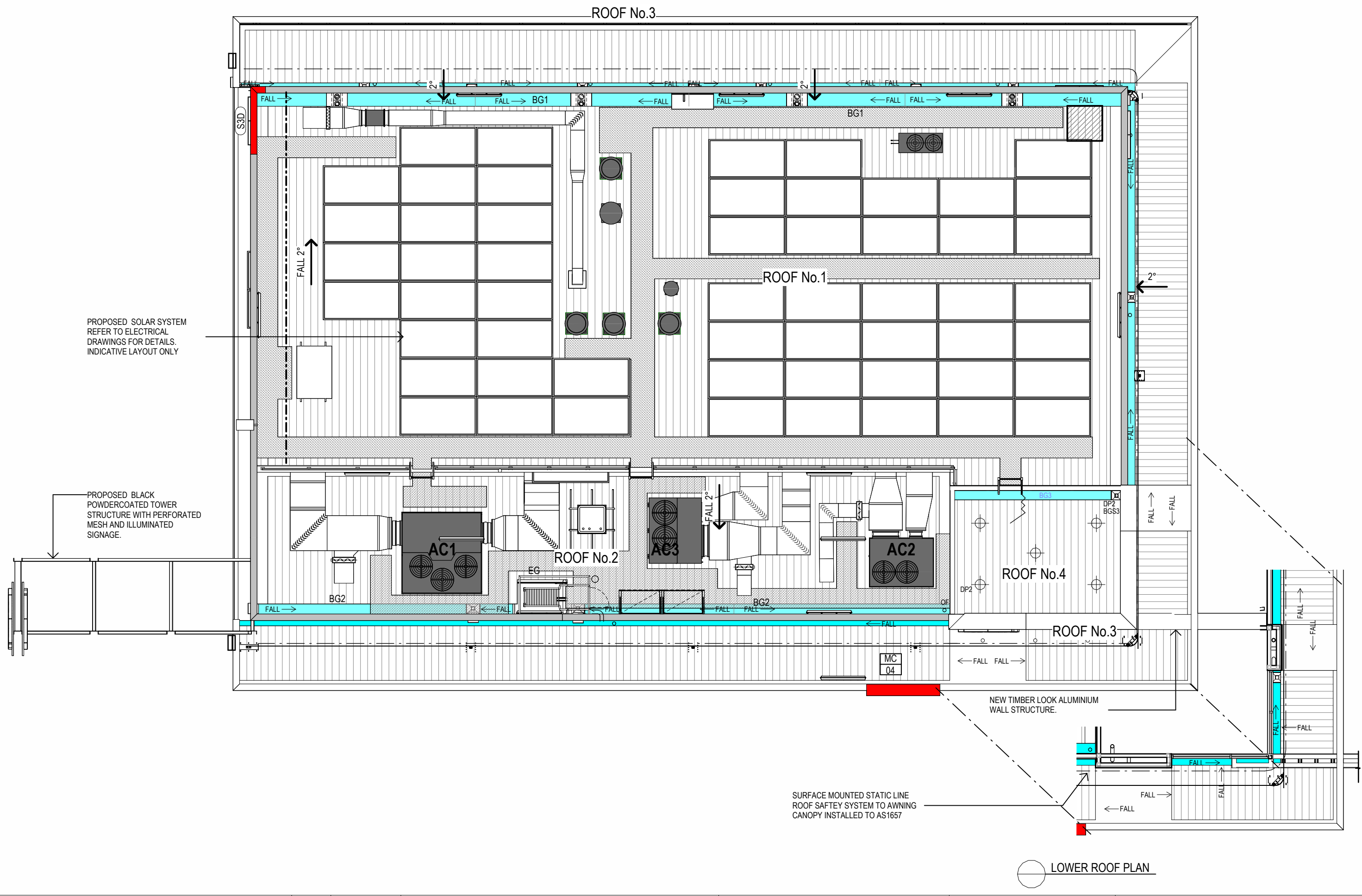
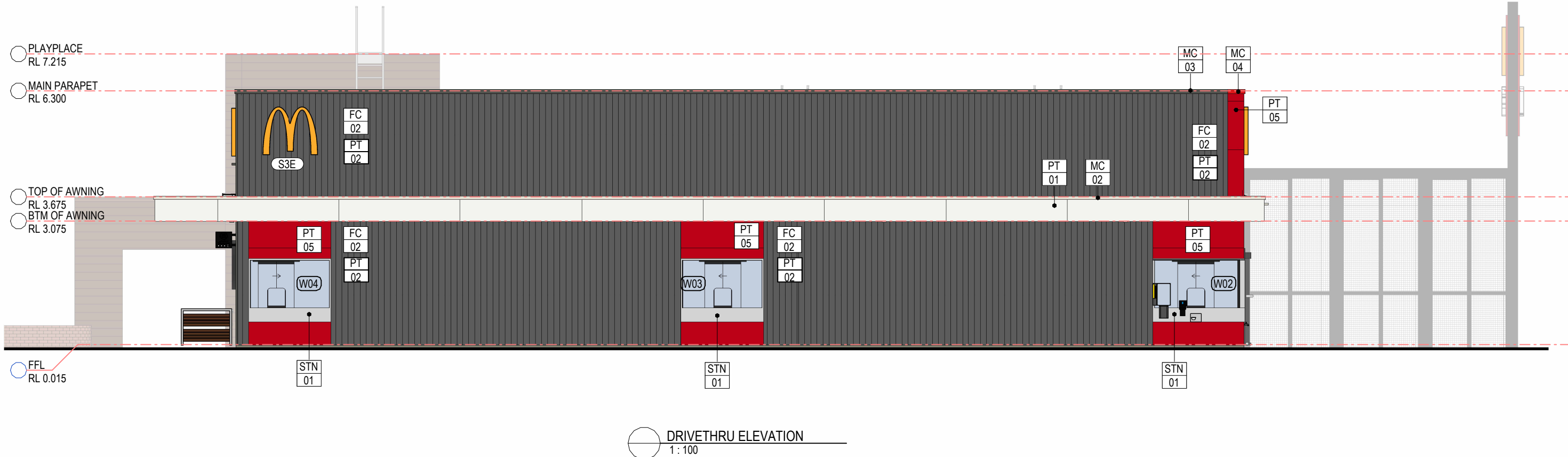
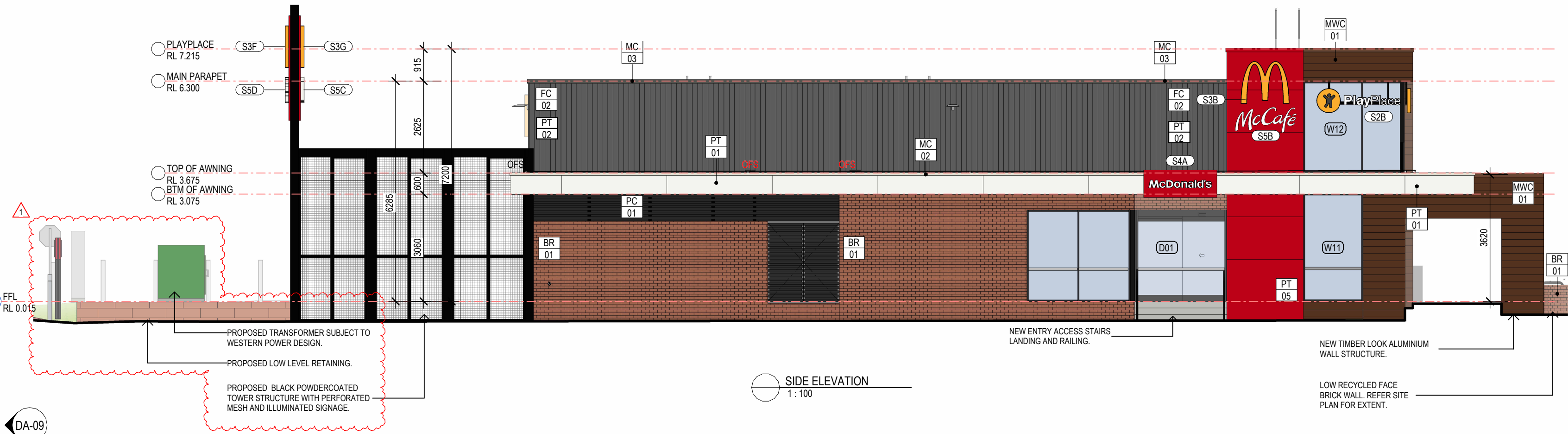
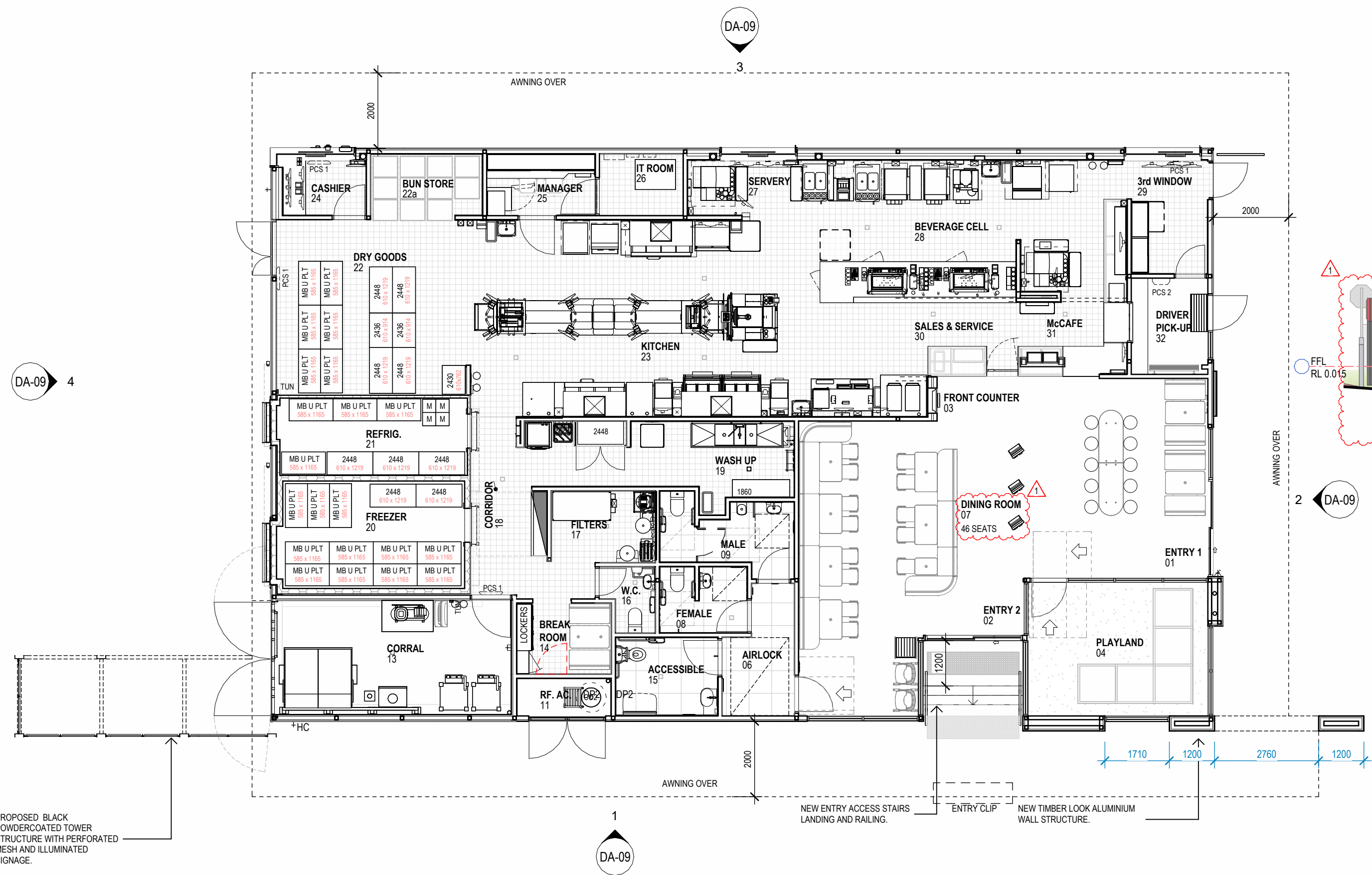
REV	DATE	DESCRIPTION
P1 P2	14.05.25 02.09.25	PRELIMINARY ISSUE PUMP AND TANK SCREENING WALL ADDED



Project PROPOSED ALDI STORE & McDONALD'S
LOT 2, 3, 4, 31 & 41 MURRAY ST. PINJARRA

Drawing SIGNAGE DETAILS

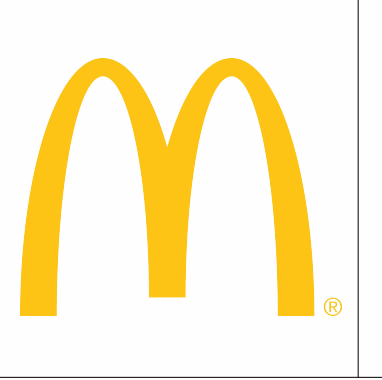
TOWN PLANNING		
Job No	251677	Drawing No.
Scale	1:100@A1	DA-08
Date	APR 2025	
Drawn	MJH	Revision P2



REV	DATE	DESCRIPTION
0	JAN 2025	AMENDED DA AS CLOUDED
1	02/09/2025	AMENDED DA AS CLOUDED

Contractor to verify all dimensions on site prior to commencing work or ordering any materials. Do not scale drawings, use figured dimensions only. Inform architect of any conflict between site conditions and documents. Architectural documents are to be read in conjunction with all relevant consultants drawings. Technical drawings are to be read in conjunction with appropriate sections of technical specification. Copyright of designs shown herein is retained by this office, written authority is required for any reproduction.

HIA
Hindley and Associates Pty Ltd
Building Designers
Unit 4/166 Stirling Highway
Nedlands WA 6009
PO Box 199 Nedlands
WA 6009
08 9388 6669
www.hindley.com.au

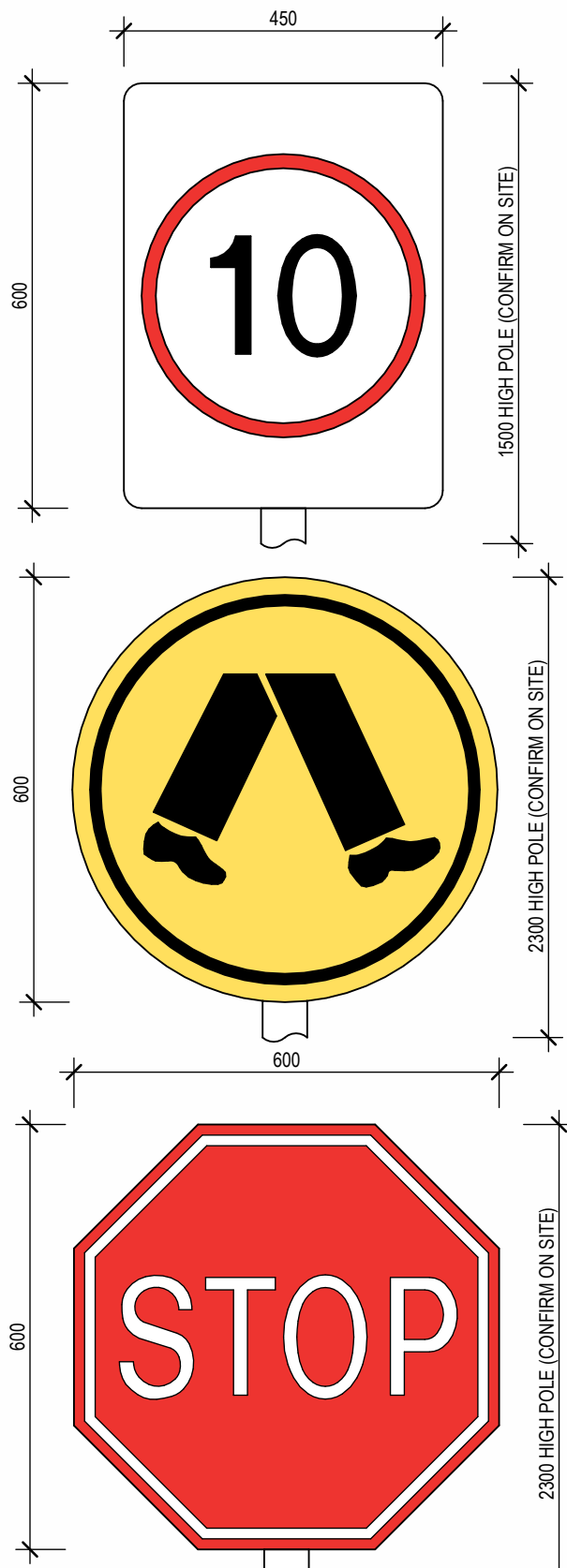


architecture
ARCHITECTS INTERIOR DESIGNERS
Suite 101, Level 1, 518 Little Bourke Street
Melbourne Victoria 3000
t: +61 3 9614 1645 f: +61 3 9614 1945
e: info@architecturehq.com w: www.architecturehq.com

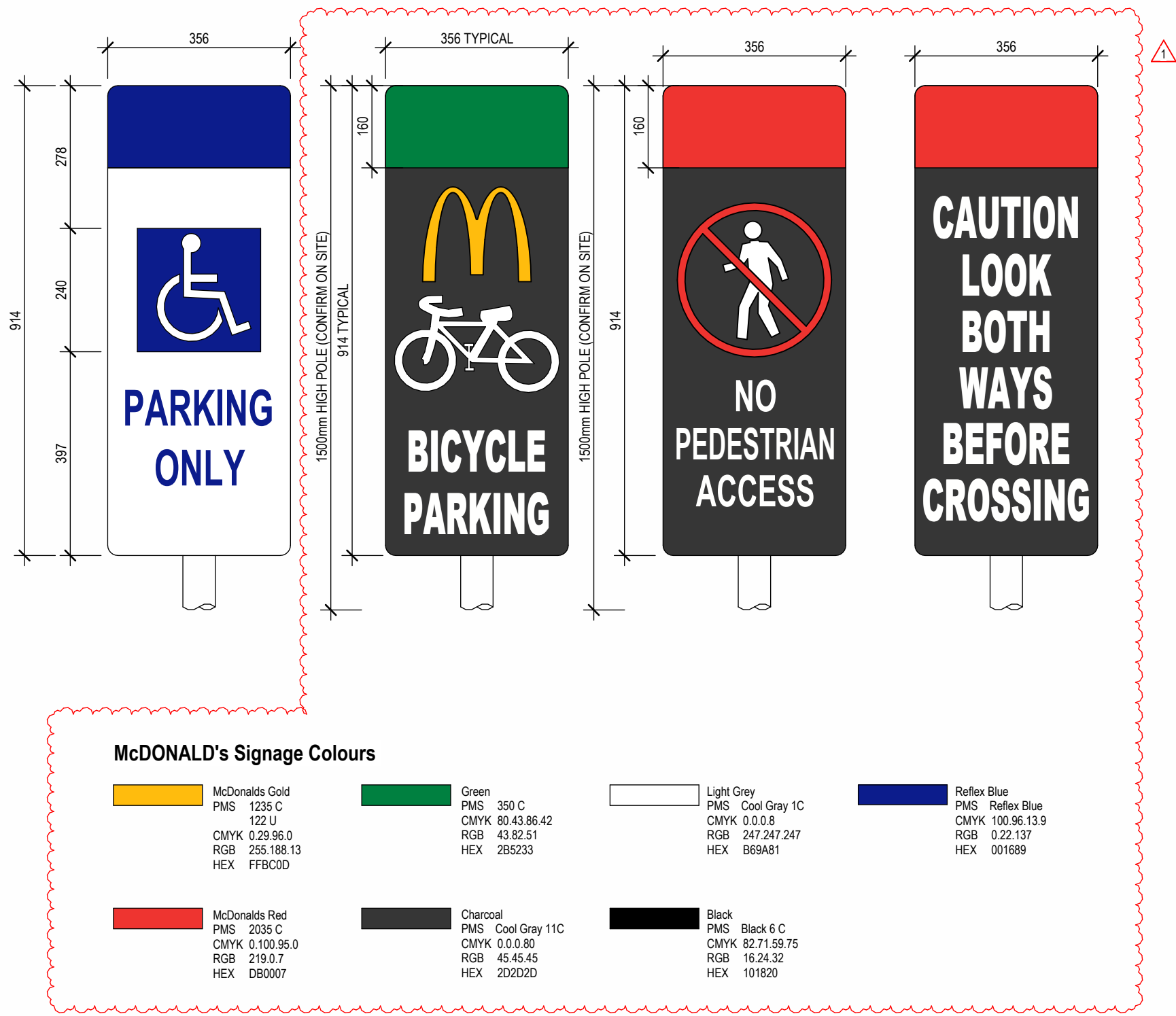


Project PROPOSED ALDI STORE & McDONALD'S
LOT 2, 3, 4, 31 & 41 MURRAY ST. PINJARRA
Drawing McDONALD'S FLOORPLANS AND
BUILDING ELEVATIONS

TOWN PLANNING		
Job No	251677	Drawing No.
Scale	1 : 100 @ A1	DA-09
Date	MAY 2025	Revision
Drawn	NR	1



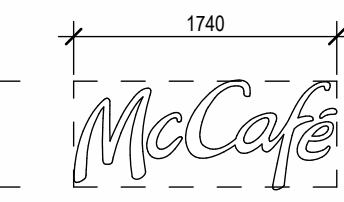
DEPENDENT ON LOCATION WITHIN SITE, S11 SIGNAGE SHOULD BE SET A MINIMUM OF 2m ABOVE TOP OF KERB TO PREVENT OBSTRUCTION TO OCCASIONAL PEDESTRIANS, OR TO REDUCE INTERFERENCE FROM PARKED VEHICLES. IF THIS DOESN'T APPLY, SIGNAGE HEIGHTS SHALL BE SET AS NOTED.



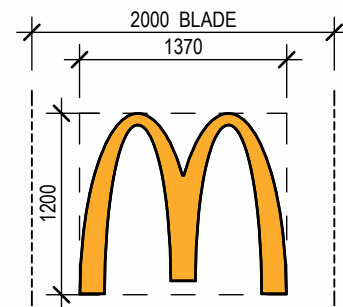
S2 PLAYPLACE
1: 50
YELLOW LOGO WITH INDIVIDUAL POLYCARBONATE LETTERING FIXED TO FRAME. INTERNALLY ILLUMINATED. WHITE LETTERS.



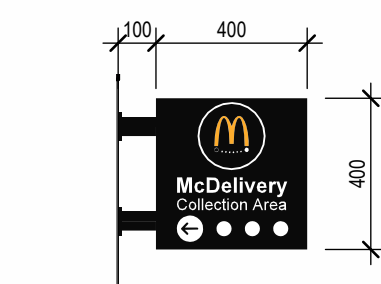
S5 McCAFE WALL BUTTON SIGN
1: 50
FABRICATED METAL BUTTON SIGN. OPAL FACES WITH BLACK VINYL GRAPHICS. LED ILLUMINATION.



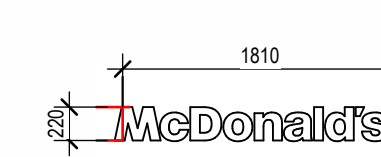
S5 WALL SIGN
1: 50
INDIVIDUAL HALO ILLUMINATED REVERSE PAN FABRICATED ALUMINIUM CHANNEL LETTERS. BRUSHED ALUMINIUM FINISH.



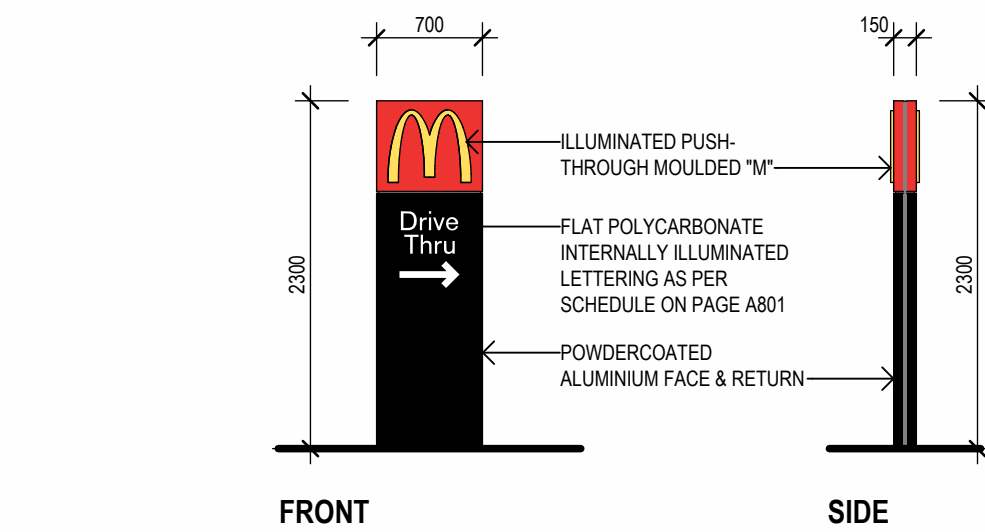
S3 WALL SIGN
1: 50
YELLOW FLAT FACE POLYCARBONATE LOGO. INTERNALLY ILLUMINATED. YELLOW LOGO.



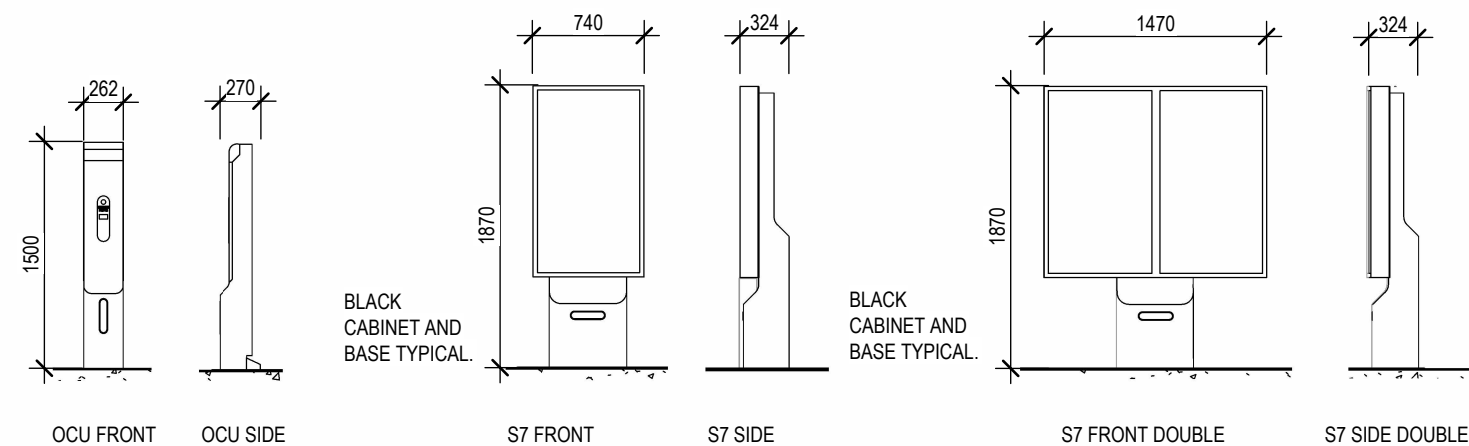
S6 McDELIVERY WALL SIGN
1: 20
FABRICATED METAL SIGN. OPAL FACES WITH BLACK VINYL GRAPHICS. LED ILLUMINATION.



S4 CLIP SIGN
1: 50
LED ILLUMINATED WORDMARK ONLY. RED CLIP TO BE CONSTRUCTED BY THE BUILDER.



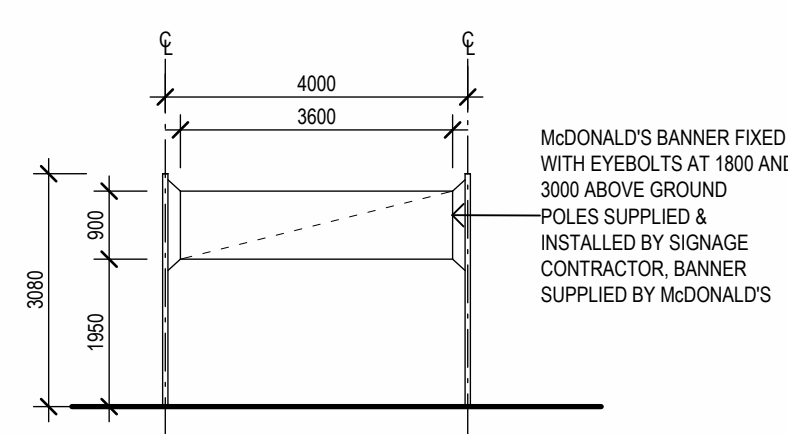
DIRECTIONAL SIGNAGES8
1: 50



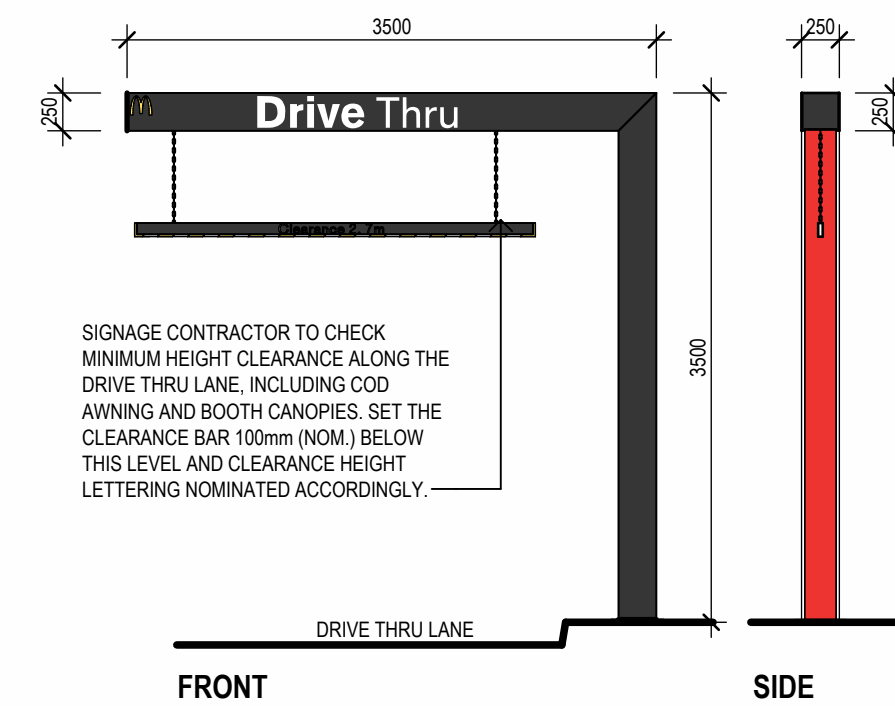
OCU FRONT OCU SIDE S7 FRONT S7 SIDE S7 FRONT DOUBLE S7 SIDE DOUBLE

EXTERNAL FINISHES SCHEDULE						
CODE	No.	AREA	DESCRIPTION	MANUFACTURER	COLOUR	IMAGE
BR	01	BUILDING WALLS AND FEATURE SCREEN WALL	RECYCLED BRICK	MIDLAND BRICK	SUBIACO RED COACH	
FC	02	MAIN BUILDING WALLS	WEATHERTEX VERTICAL WEATHERBOARDS	WEATHERTEX	WAYWARD GREY PG1G8	
MC	01	PARAPET CAPPING - ADJACENT TIMBER LOOK CLADDING (PLAYLAND)	PREFINISHED METAL CAPPING / FLASHING	COLORBOND	JASPER	
MC	02	PARAPET CAPPING - AWNINGS	PREFINISHED METAL CAPPING / FLASHING	COLORBOND	SURFMIST	
MC	03	PARAPET CAPPING - MAIN BUILDING WALLS	PREFINISHED METAL CAPPING / FLASHING	COLORBOND	WOODLAND GREY	
MC	04	PARAPET CAPPING	PREFINISHED METAL CAPPING / FLASHING	COLORBOND	MANOR RED	
MWC	01	PLAYPLACE & PARAPETS	TIMBER LOOK ALUMINIUM CLADDING SYSTEM USING KNOTWOOD 200mm CLADDING PROFILE	KNOTWOOD	KWILA	
MWC	02	ROOF WELL (INTERNAL PARAPET LINING)	CUSTOM ORB CORRUGATED STEEL RIVET FIXED VERTICALLY TO FRAMES	LYSAGHT	ZINCALUME	

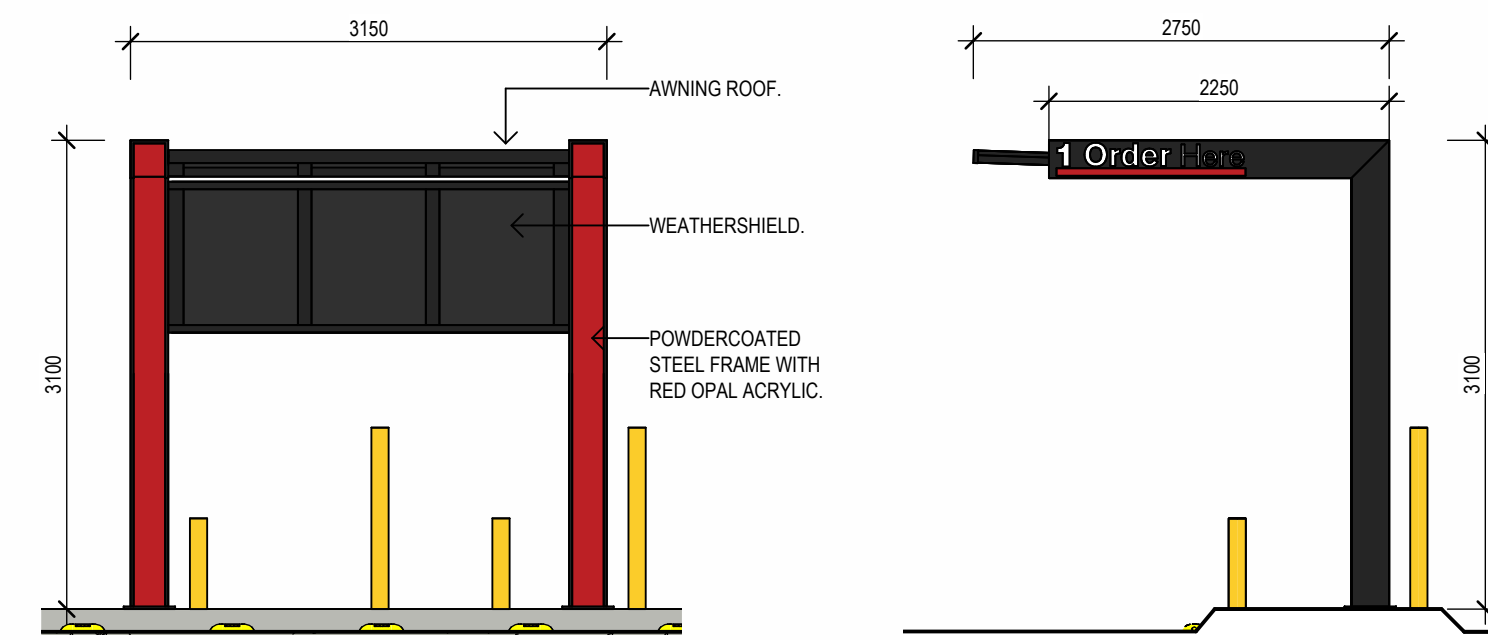
EXTERNAL FINISHES SCHEDULE						
CODE	No.	AREA	DESCRIPTION	MANUFACTURER	COLOUR	IMAGE
PC	01	CORRAL BATTENS & ROOF ACCESS, ELEC. ROOM DOORS	POWDERCOAT FINISH	DULUX DURATEC ZEUS	LUNAR ECLIPSE SATIN (BLACK)	
PM	01	BLACK STEEL MESH BETWEEN BLACK STEEL POSTS ON SCREEN STRUCTURE	PERFORATED SCREEN MESH	ARROW METAL	PATTERN 449 SQUARE SHAPE WITH DIAGONAL PITCH	
PT	01	FASCIAS (RIBBON)	PAINT FINISH. REFER SPECIFICATION FOR DETAILS ON PAINT TYPE & APPLICATION	DULUX	VIVID WHITE PW1H9	
PT	02	MAIN BUILDING WALLS	PAINT FINISH. REFER SPECIFICATION FOR DETAILS ON PAINT TYPE & APPLICATION	DULUX	WAYWARD GREY PG1G8	
PT	05	BLADE WALL & DRIVETHRU WINDOWS	PAINT FINISH. REFER SPECIFICATION FOR DETAILS ON PAINT TYPE & APPLICATION	DULUX	HOTLIPS PB1F2	
RUB	02	ALUMINIUM WINDOWS & DOOR FRAMES. REFER NOTE 1.	POWDERCOAT FINISH	DULUX DURATEC ZEUS	LUNAR ECLIPSE SATIN (BLACK)	
STN	01	DRIVETHRU WINDOW SILL & SURROUND	RECONSTITUTED STONE. REFER DECOR DOCUMENTS	REFER DECOR	REFER DECOR	



S14 - BANNERS
1: 100

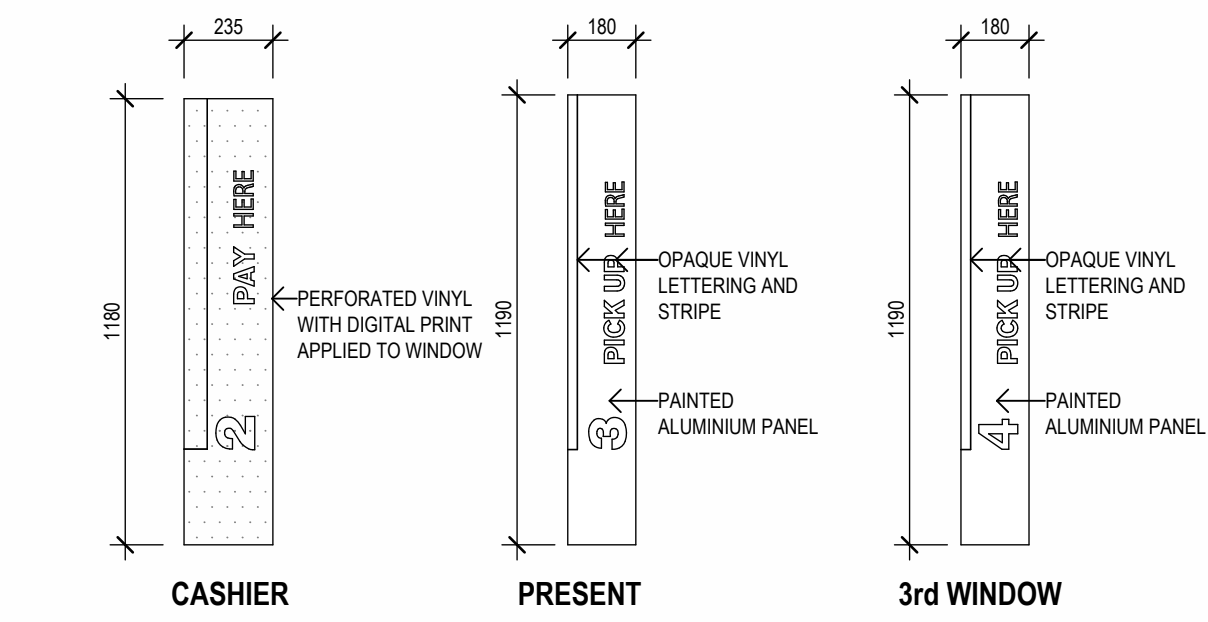


S9 HEIGHT CLEARANCE GANTRY
1: 50



S10 ORDER CANOPY ELEVATION
1: 50

S10 ORDER CANOPY SIDE
1: 50

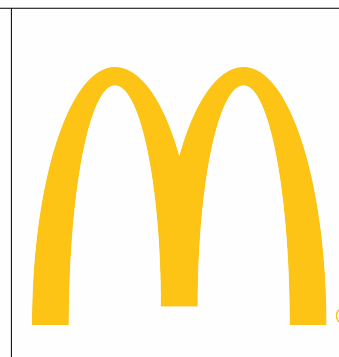


S13 DRIVE THRU INFORMATION SIGNS
1: 20

Contractor to verify all dimensions on site prior to commencing work or ordering any materials. Do not scale drawings, use figured dimensions only. Inform architect of any conflict between site conditions and documents. Architectural documents are to be read in conjunction with all relevant consultants drawings. Technical drawings are to be read in conjunction with appropriate sections of technical specification. Copyright of designs shown herein is retained by this office, written authority is required for any reproduction.

REV	DATE	DESCRIPTION
1	26/08/2025	AMENDED AS CLOUDED
0	JAN 2025	AMENDED DA AS CLOUDED

HIA
Hindley and Associates Pty Ltd
Building Designers
Unit 4/166 Stirling Highway
Nedlands WA 6009
PO Box 199 Nedlands
WA 6009
08 9386 6669
www.hindley.com.au

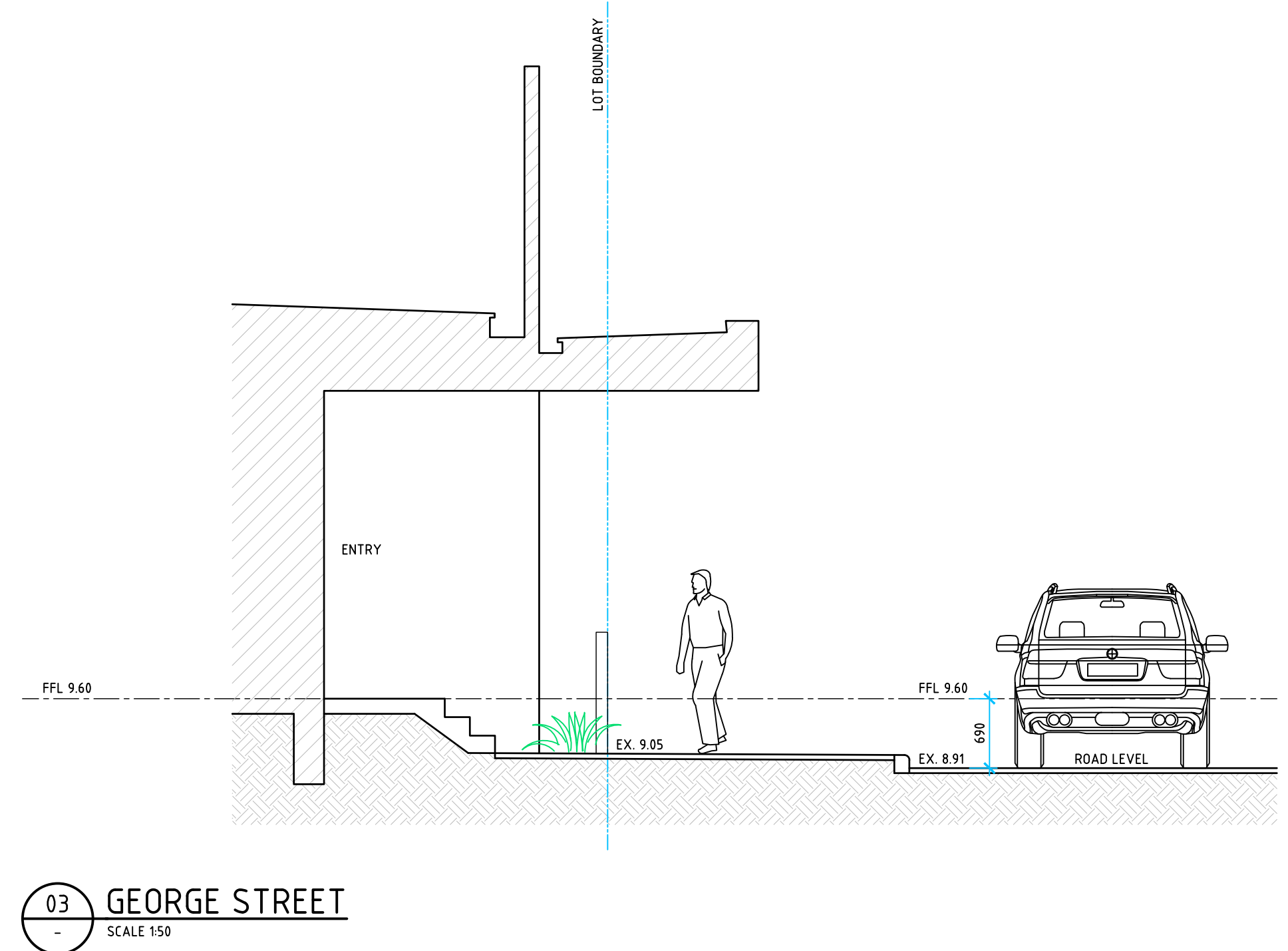
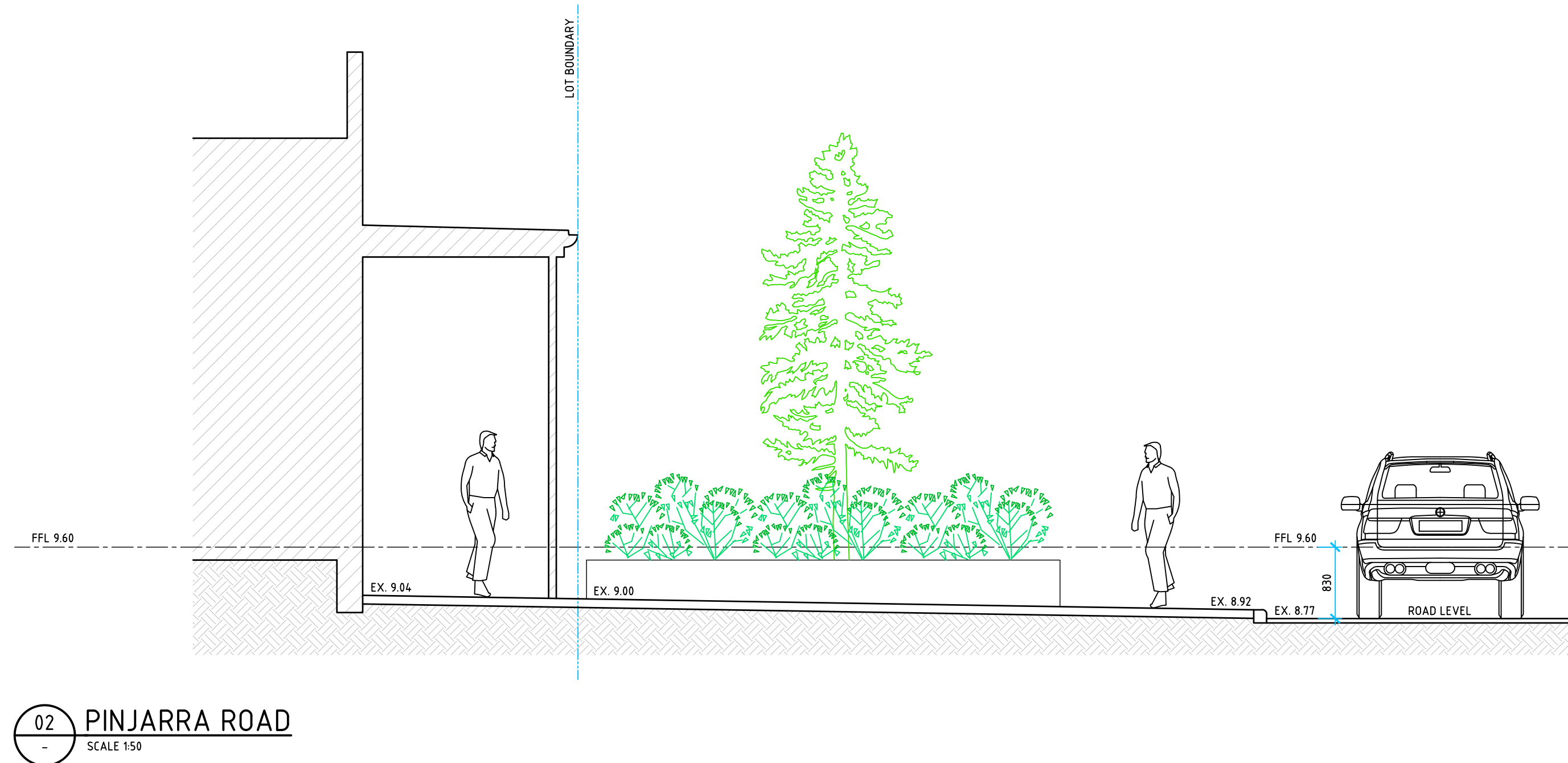
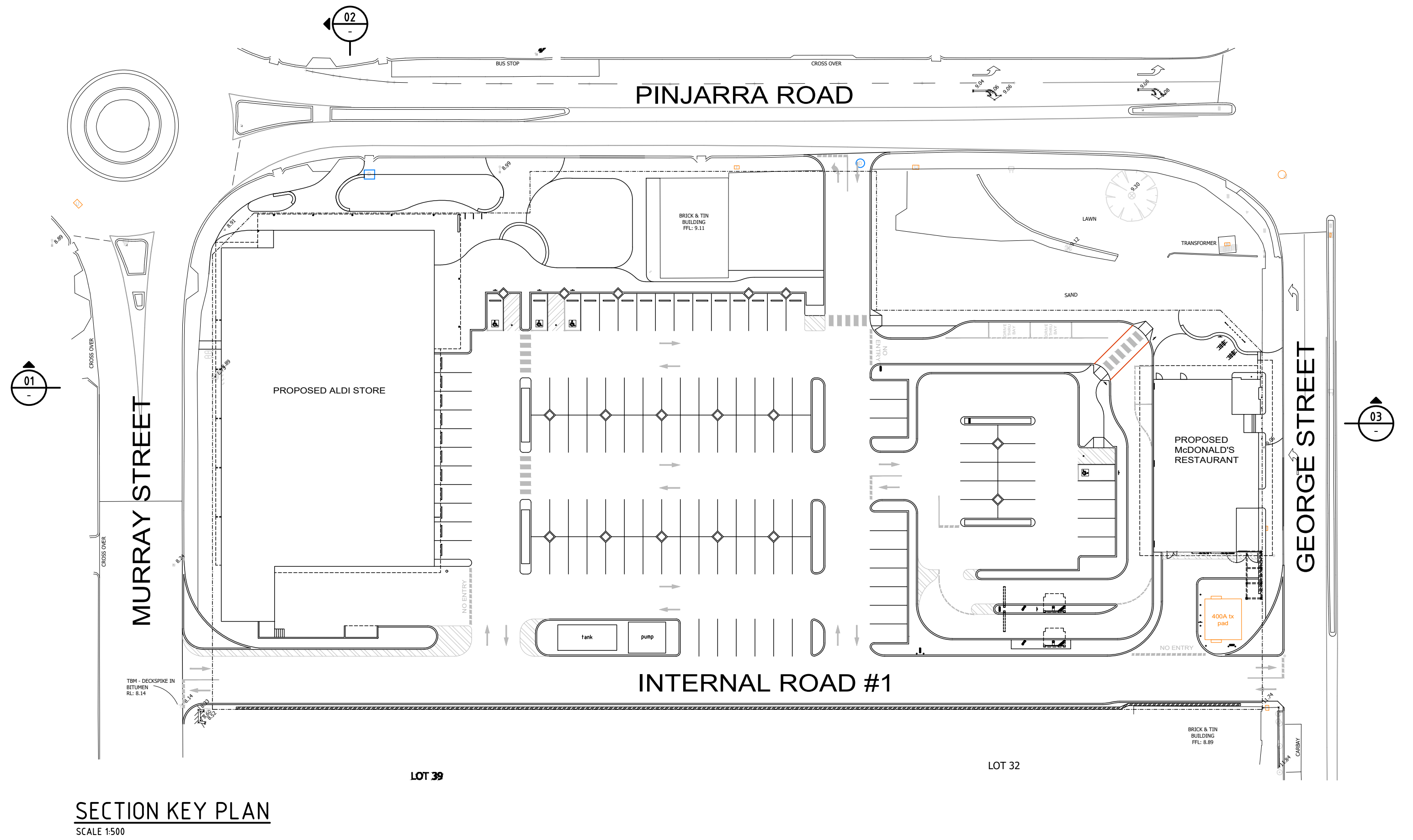
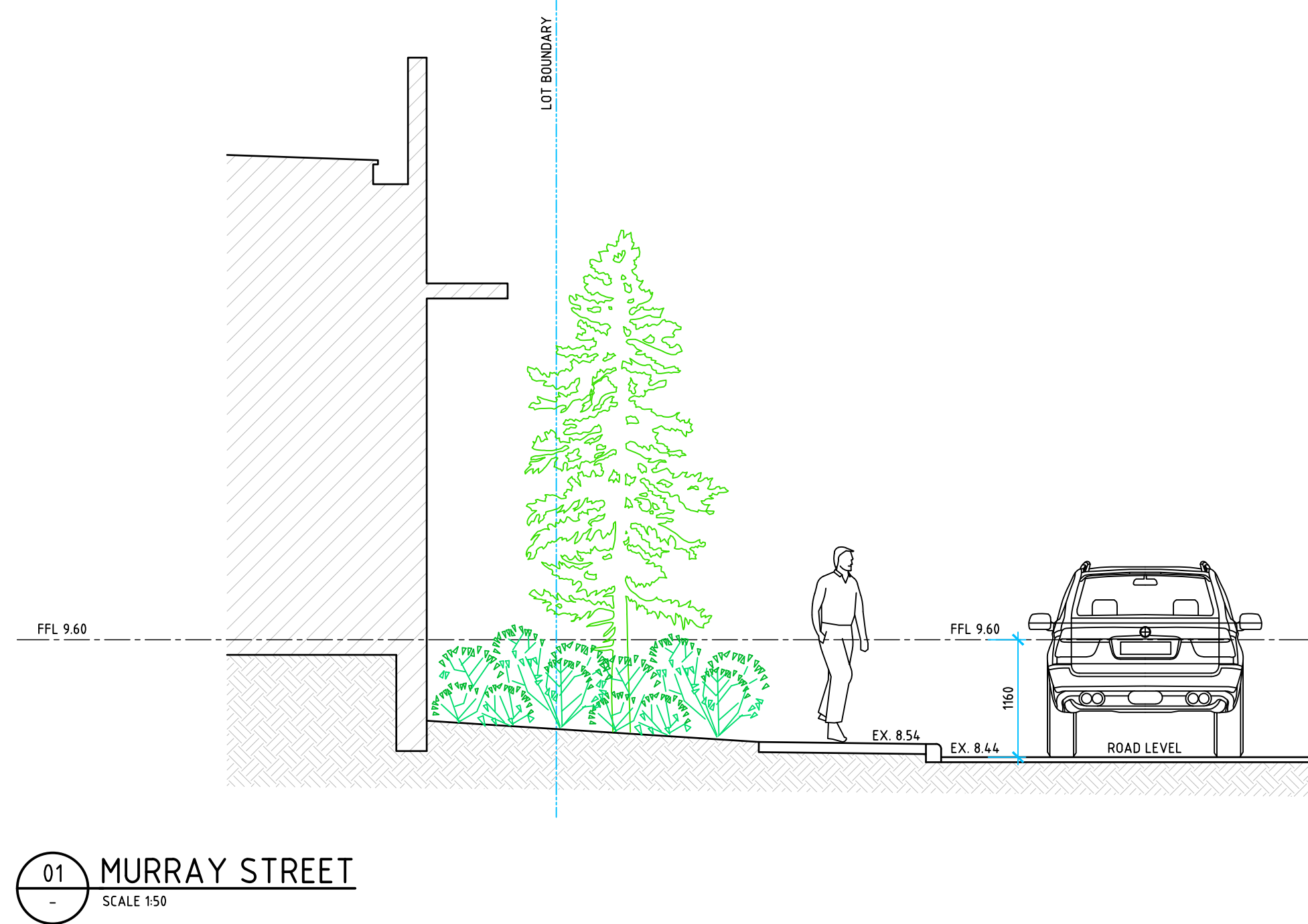


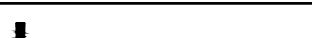

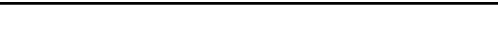
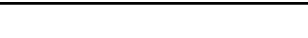
architecture
ARCHITECTS INTERIOR DESIGNERS
Suite 101, Level 1, 518 Little Bourke Street
Melbourne Victoria 3000
t: +61 3 9614 1645 f: +61 3 9614 1945
e: info@architecturehq.com w: www.architecturehq.com



Project PROPOSED ALDI STORE & McDONALD'S
LOT 2, 3, 4, 31 & 41 MURRAY ST. PINJARRA
Drawing McDONALD'S SIGNAGE DETAILS

TOWN PLANNING			
Job No	251677	Drawing No.	
Scale	As indicated @ A1	DA-10	
Date	MAY 2025	Revision	
Drawn		1	



contractor to verify all dimensions on site prior to commencing work or ordering any materials. Do not scale drawings, use figured dimensions only. Inform architect of any conflict between site conditions and documents. Architectural documents are to be read in conjunction with all relevant consultants drawings. Technical drawings are to be read in conjunction with appropriate sections of technical specification. Copyright of designs shown herein is retained by this office, written authority is required for any reproduction. Copyright 2020	REV	DATE	DESCRIPTION	 Hindley and Associates Pty Ltd Building Designers Unit 4/168 Stirling Highway Nedlands WA 6009 PO Box 199 Nedlands WA 6009 08 9386 6699 www.hindley.com.au		 Suite 101, Level 1, 518 Little Bourke Street Melbourne Victoria 3000 t: +61 3 9614 1645 f: +61 3 9614 1945 e: info@architecturehq.com w: www.architecturehq.com		Project PROPOSED ALDI STORE & McDONALD'S LOT 2, 3, 4, 31 & 41 MURRAY ST. PINJARRA		TOWN PLANNING	
	1	02/09/25	AMENDED AS CLOUDED					Job No 251677	Drawing No.		
								Scale 1:50 @ A1	DA-11		
								Date MAY 2025			
								Drawn AJJ	Revision 1		
Drawing PROPOSED STREET SECTIONS											